

2024 Safari Catalogue



AFRICAN VIEW

TOURS AND SAFARIS

Explore, Experience, Travel.





About Us



African View Tours and Safaris is a professional Safari Operator with 14 years of experience in providing guests with the most genuine and authentic Zambian Safari Experiences.

Founded in Livingstone in 2010, African View Tours and Safaris rapidly became one of the most entrusted and reliable Safari Operators in the region, delivering the most authentic Safari Experiences without compromising on safety and comfort.

Today, our range of Safaris proudly include exclusive **Mobile Safaris**, authentic **Cultural Expeditions**, exciting **Motorcycle Safaris**, pristine **Wilderness Bushcamps** and thrilling **Wilderness Training Experiences**.

In 2023, African View Tours and Safaris joined **Shamba Travels**, Zambia's largest Tourism Group, allowing further expansion of its Safari Operations.

Luxury is not defined by abundance, but by the exclusivity of experiencing nature's true essence.



About Zambia

From the majestic Victoria Falls to the remote wilderness of South Luangwa National Park, Zambia is a land of unmatched beauty where Nature, Wildlife and local Culture come together to gift visitors with unforgettable experiences



Still being a niche tourism destination, Zambia remains one of the most uncontaminated Countries of the Southern Africa region, from both a Natural and Cultural perspective: thanks to the scarce presence of tourists and the extraordinary abundance of wildlife, Zambia is generally considered to be ***the best Safari destination in Africa.***

Its National Parks are still largely wild and unexplored allowing visitors to live **unforgettable experiences in direct contact with nature**: Zambia is the country that offers the **widest range of game-viewing activities** such as game drives, walking safaris, night drives, motorcycle safaris, canoe and boat safaris, horseback adventures, and many more. It's also considered **heaven for leopards lovers** and birdwatchers, **due to their abundances and ease of sighting**.

From a cultural standpoint, **Zambian population is very open and friendly** and this country offers **genuine local interactions** (including some spectacular tribal celebrations patronised by UNESCO as masterpieces of Oral Tradition), without exposing the visitors to risks or hassles.

Zambia is a **very vast Country**: travelling by road between National Parks and other destinations can involve **very long transfers**, and some of the roads' conditions can take a toll on even the best vehicles: an overland Zambia Safari must always be faced with a sense of adventure. Fortunately, domestic flights are also popular, reliable and convenient, offering visitors an additional option to perfectly tailor their experiences to their expectations.

Mobile Safaris

Our Mobile Safaris are carefully crafted as a contemporary interpretation of the early explorers' expeditions.

The first explorers and adventurers ever to travel through these parts of Africa found themselves immersed in **a world of awe and excitement** that changed their lives forever.

Even when crossing the wildest terrains and coming in contact with unfamiliar cultures, they could always rely on an *impeccable organisation, excellent local guides* and all the *comforts* provided by their modern society. They knew it was a once-in-a-lifetime experience and a privilege to witness such such wonderments and return home with a bag full of fantastic memories.

They taught us that ***“luxury” is not an end in itself***, but rather a tool to enjoy the exclusivity of the experience and the overwhelming feeling of being surrounded by kilometres of unexplored bush teeming with wildlife.

In today's world, there's nothing more precious than time. “Luxury”, therefore, becomes the *slow pace of a campfire* under a million stars, sipping a drink while enjoying the sounds of the untamed wilderness, with the certainty that every aspect of your adventure is carefully taken care of by experienced professionals who understand that the ***“Art of Safari”*** relies on seamlessly blending the right amount of luxury, with the rusticity of the African bush.

Wherever possible, our Mobile Safaris can provide two different – but equally exciting - experiences: ***“Rustic”*** (entirely overland, camping) and ***“Adventure with Style”*** (integrating domestic flights, exclusive lodges and bush-camps, and multiple destinations within each park).

Each of our Itineraries is meticulously crafted to ensure guests can experience the best Zambia has to offer under all points of view: wildlife, landmarks, culture and travel experiences.

Rustic Mobile

- ✓ **2 people staff** (Guide and Bush chef) will stay with you for the entire duration of the Safari, getting to know your specific preferences.
- ✓ **Road Transfers** allow you to have a closer contact with the local population and the environment.
- ✓ **Camping** for an experience closer to nature. Spacious canvas tents with roll mattress and sleeping bag.
- ✓ **Support vehicle** for equipments and supplies for any group of 4 and above.



Safari Vehicle



Camping



Exclusive bush camps

Safari with Style

- ✓ **A mix of road transfers and domestic flights** to offer guests the best service.
- ✓ **Exclusive Bush camps & Lodges** in each location, usually managed by our teams in conjunction with local staff.
- ✓ **Two or more destinations/areas** (wherever possible) in each location or Park.

What make our Mobile Safaris so unique?

- ✓ **Fourteen years of experience** in running Safaris in the wildest regions of Africa, with an **excellent satisfaction score** from travellers.
- ✓ **Unique, custom-designed itineraries** off the beaten path.
- ✓ **Highly experienced guides and chefs** to make a real difference in your safari.
- ✓ **Unique custom built vehicles** with removable side panels to enhance game viewing experience.
- ✓ **“Non-Participation Tours”**.
- ✓ **Support vehicle** (where present) sets up camp ahead of guests' arrival.



Mobile Safaris

Index

Mobile Safaris

✓ The Best of Zambia	8
✓ Emotions from the Bush	
- Rustic	10
- Adventure with Style	12
✓ Three Rivers	
- Rustic	14
- Adventure with Style	16
✓ Western Route	18
✓ Northern Route	20

Focus Safaris

✓ Complete Kafue	
- Rustic	24
- Adventure with Style	26
✓ Complete South Luangwa	28
✓ Complete Luangwa Valley	30

Cultural Expeditions

✓ “Likumbi Lya Mize” (expedition)	33
✓ “Kulamba” (expedition)	36



Mobile Safaris

“Best of Zambia” Safari

Description:

This Safari is one of our guests' favourites as it combines **Zambia's most iconic landmark** - the Victoria Falls - two of the best **National Parks** of Africa - Lower Zambezi National Park and South Luangwa National Park - many genuine and interesting **cultural experiences** - social interactions, schools visit, heritage sites. Accommodation is **all lodging** in **carefully handpicked, comfortable locations** to offer the **best** to our travellers. ***This Safari is a perfect choice for your first visit to Zambia.***

SAFARI OVERVIEW

DAYS: 10

TYPE OF VEHICLE: Minibus for transfers on the main roads. Open 4x4 Safari vehicles during Game Drives. Domestic flight to South Luangwa

NO. OF PARTICIPANTS: 2-10

STAFF: English-speaking professional guide – Chef

MEALS: Specified in the itinerary as: B(reakfast) / L(unch) / D(inner)

START: Livingstone

END: Lusaka (NOTE: This tour can also be reversed: start in Lusaka and end in Livingstone at no extra cost)

ACCOMMODATION: ALL LODGING

DETAILED ITINERARY

Day 1: Livingstone (Travel distance: 10km / 20 min. – Tramac Road)

Upon landing at Livingstone international airport, you will be welcomed by our drivers and transferred to your accommodation at Maramba River Lodge, where you will spend three nights in a B&B rate in a Safari Chalet on a Full Board basis. Dinner at the Lodge's restaurant included
-/D

Day 2: Tour of the Victoria Falls (Zambian Side) and Rhino Drive in Mosi-Oa-Tunya National Park

Breakfast at Maramba River Lodge, followed by a guided tour of the Victoria Falls from the Zambian side. Return to

to the Lodge for lunch and afternoon Rhino Game Drive in the Mosi-Oa-Tunya National Park, aiming to find the last remaining white Rhinos in Zambia. Dinner at the lodge.

B/L/D

Day 3: Livingstone – Free day

Free day dedicated to optional activities that can be booked in advance or directly on site. All meals at Maramba River Lodge.

B/L/D

Day 4: Livingstone – Lower Zambezi Valley / Nsofu Lodge (Travel distance: 500km / 7-8 hrs – Tramac Road)

Breakfast at the lodge, followed by an early departure (07.00) for a long transfer on tarmac road (approximately 7-8 hours) to Chirundu. Depending on the time, lunch (not included) will be along the way (your guides will point fast-foods and restaurants where you can eat while they are refuelling) or in Chirundu upon arrival. From there, you will continue for approximately 15km of gravel road to Nsofu Lodge, where you will be accommodated for 2 nights in a beautiful chalet facing the Zambezi River, fully equipped with bar, swimming pool and private ablutions. Afternoon sunset Cruise on the Zambezi River. Dinner at the lodge.

B/-/D

Day 5: Lower Zambezi Valley / Nsofu Lodge

Breakfast at the lodge, followed by a breath-taking full-day boat safari on the Zambezi River with an unforgettable lunch prepared for you on an island in the middle of the Zambezi river, where you will have lunch looking at the countless hippos, crocodiles, and elephants populating the river shores.

The Lower Zambezi Valley is renowned for its breath-taking views and for the abundance of wildlife that lives along the Zambezi River. This valley hosts both the Lower Zambezi National Park (on the Zambian shores) and Mana Pools National Park (on the Zimbabwean shores) creating a vast protected area where animals are free to roam without boundaries. This area deserves to be visited both by river and by land in order to fully understand the wild beauty of this place. Lower Zambezi National Park is the most recent park in Zambia and one of the wildest and most picturesque in the whole Africa.





South Luangwa National Park

Alternatively, guests can choose other activities such as half-day boat safari + half day fishing, village tour, birding tour, etc. It is also possible to organise a full day Game Drive in the National Park at a supplement.

Before sunset, you will return to Nsofu lodge. Dinner and night lodging.

B/L/D

Day 6: Lower Zambezi Valley – Lusaka (Travel distance: 180 km / 3 hrs – Tramac Road) – South Luangwa National Park

Sunrise breakfast at the lodge, followed by a 2.5 hours transfer to Lusaka, with a en-route visit to the Chirundu Fossil Forest, where you will have the chance to visit a fossil site with petrified trees from more than 160,000,000 years ago and learn a bit more about the history and geography of this area. Upon reaching Lusaka, you will be taken to the airport where you will embark a domestic flight to South Luangwa National Park.

Our resident guides will collect you from the airport and transfer you to Thornicroft Lodge, where you will spend 4 nights in a Bush-style Chalet. Your stay includes 2 Game Drives per day on board of our vehicles and all meals prepared by our chef. Depending on the time of your arrival, it may be possible to have a first Night Drive in the National Park.

B/-/D

Days 7-8-9: South Luangwa National Park

South Luangwa National Park is the most famous of National Parks in Zambia due to the abundance of wildlife and the great opportunities to spot large predators. In addition to a large population of felines (mostly leopards and lions), it is home of a large number of elephants, hippos, buffaloes and numerous endemic species such as Thornicroft giraffe, Cookson's wildebeests, Crashway's zebras. The Luangwa River has the highest concentration of hippos and leopards per km² in the whole Africa and offers great reproduction and hunting ground for many animals, such as fish eagles, jackals, hyenas, crocodiles and countless birds. Sunsets on the Luangwa River are unforgettable experiences and the visit to this National Park is considered one of the highlights for any true Africa lover.

During your stay, you will have 2 game drives per day and all meals at the camp. Nights will be at Thornicroft Lodge in a Bush-style chalet. Alternative activities, such as Walking Safaris, Local tours and wilderness Bush camp extensions

will be available for you at a supplement and can be decided in advance or booked directly during your stay.

B/L/D

Day 10: Mfuwe – Lusaka. End of Tour

Breakfast at the lodge. Depending on the time of your flight you will be taken to Mfuwe airport for a domestic flight to Lusaka (included). Connection with your return international flight. End of arrangements

B/-/-

OPTIONAL: DOMESTIC FLIGHT LUSAKA-MFUWE

It is possible to add a Domestic flight (1 hour) to avoid the long road transfer from Lusaka to South Luangwa.

Domestic flights tickets can vary from approximately 80 US\$ per person each way (special offers – fixed schedule) up to 350,00 US\$ per person each way (full fare – flexible schedule). Ticket price will be confirmed at the time of enquiry, based on the actual best rate of the tickets.

Taking a domestic flight may allow travellers to connect directly to their international return flight, giving them the opportunity to either leave a day earlier or stay one night longer in South Luangwa National Park. In this case, the rate of the Safari will be modified to reflect the changes.

Participants who will decide to book a domestic flight will be assisted to book a car transfer from their accommodation to the airport and will be met at landing in Mfuwe Airport by our staff permanently located in South Luangwa.

Description:

This Safari is dedicated to real wildlife enthusiasts, as it mainly focuses on two of the best **National Parks** in the whole Africa: Lower Zambezi National Park and South Luangwa National Park. Choose between a **Rustic experience** (camping, road transfers, one location in each park) and an **Adventure with Style** (lodges and remote bush-camps, road and domestic flights and two locations in each park) to further adapt it to your personal preferences.

SEASONAL AVAILABILITY:

The Mobile Safari as described in the itinerary is available from APRIL 1st to NOVEMBER 30th. The Safari can also be done throughout the year with adjustments to the itinerary depending on the rains.

TOUR SUMMARY:

DAYS: 10

TYPE OF VEHICLE: 4x4 Mobile Safari Vehicle in the wilderness areas. Minibus transfer between Lusaka and South Luangwa National Park.

NO. OF PARTICIPANTS: 2-6

STAFF: English-speaking professional guide – Chef

MEALS: Specified in the itinerary as: B(reakfast) / L(unch) / D(inner)

START: Lusaka

END: Lusaka

DETAILED ITINERARY

Day 1: Lusaka (Travel distance: 40km / 1 hr – Tramac Road)

Upon arrival at Lusaka international airport, you will be welcomed by your guides and assisted in final preparations (local SIM card, forex, etc.) before your Safari starts. Short transfer across town and check-in at Sandy's Creations, a beautiful accommodation immersed in wonderful gardens with two swimming pools, bars and restaurants. Dinner in Lusaka not included.

-/-

Day 2: Lower Zambezi National Park (Travel distance: 185km / 5 hrs – Tramac Road + Bush Trails)

The Lower Zambezi Valley is renowned for its breath-taking views and for the abundance of wildlife that lives along the shores of the Zambezi River. This valley hosts both the Lower Zambezi National Park (on the Zambian shores) and Mana Pools National Park (on the Zimbabwean shores) creating a vast protected area where animals are free to roam without boundaries. This area deserves to be visited both by river and by land in order to fully understand the wild beauty of this place. Lower Zambezi National Park is the most recent park in Zambia and one of the wildest and most picturesque in the whole Africa.

Departure after breakfast and reach your accommodation after approximately 4 to 5 hours (150km tarmac road + 70km village trails). Set up camp at Mvuu Lodge (a fantastic campsite by the Zambezi river fully equipped with toilets and hot showers) and lunch prepared by our accompanying chef. Afternoon Sunset cruise on the Zambezi River. Dinner by the campfire prepared by our accompanying chef and night camping.

B/L/D

Days 3-4: Lower Zambezi National Park

Wake up and sunrise breakfast.

Full-day Gamedrives in the Lower Zambezi National Park with pic-nic lunch in the park and return to the lodge by sunset.

Dinner prepared by our accompanying chef. Night camping.

B/L/D

Day 5: Lower Zambezi National Park – Lusaka (Travel distance: 220km / 5.5 hrs – Tramac Road + Bush Trails)

Sunrise breakfast and return transfer to Lusaka. Along the way you will visit to a local school and/or the Chirundu Fossils Forest heritage site. Upon arrival you will check in at Wild dogs Camp (or similar), in the northern part of Lusaka and have a free leisure afternoon. Dinner in Lusaka not included.

B/-

“Emotions from the Bush” Safari - Rustic



South Luangwa National Park



Lower Zambezi National Park

Day 6: Lusaka – South Luangwa National Park (Travel distance: 700km / 10-11 hrs – Tramac Road)

Very early wake and sunrise breakfast at 05.30 at the lodge. At 06.00 a.m. our minibus will pick you up to start a transfer to Mfuwe – South Luangwa National Park (700km of tarmac road – approximately 11 hours). Lunch break along the way depending on time (e.g. traditional Zambian meal at a local tavern).

Mfuwe is the closest village from where to access South Luangwa National Park. Even though it is very close to such an internationally acclaimed attraction, it still maintains the spirit and looks of a traditional Zambian village.

Arrival in Mfuwe expected in the afternoon and check-in at Thornicroft Lodge where you will spend three nights in a permanent Safari tent (non en-suite), located in an area fully equipped with ablutions and hot showers. All meals prepared by the accompanying cook and all game viewing activities done by our resident guides on board of our vehicles

Dinner prepared by your accompanying chef.

OPTIONAL:

Domestic Flight: Domestic flight to Mfuwe (1 hour). At arrival, you will be welcomed by our guides and transferred to your accommodation.

B/-/D

Days 7-8: South Luangwa National Park

South Luangwa National Park is the most famous of National Parks in Zambia due to the abundance of wildlife and the great opportunities to spot large predators. In addition to a large population of felines (mostly leopards and lions), it is home of a large number of elephants, hippos, buffaloes and numerous endemic species such as Thornicroft giraffe, Cookson's wildebeests, Crashway's zebras. The Luangwa River has the highest concentration of hippos per km² in the whole Africa and offers great reproduction and hunting ground for many animals, such as fish eagles, jackals, hyenas, crocodiles and countless birds. Sunsets on the Luangwa River are unforgettable experiences and the visit to this National Park is consider one of the highlights for any true Africa lover.

During your stay, you will have 2 game drives per day and all meals at the camp. Nights will be camping around the fire with all meals prepared by the accompanying cook.

B/L/D

Day 9: Mfuwe – Lusaka (Travel distance: 700km / 10-11 hrs – Tramac Road)

Early wake and sunrise breakfast. At 06.00 a.m. you will start off to Lusaka using the same road as per the way there. Lunch break along the way in a local tavern for a traditional Zambian meal. Arrival in Lusaka expected before sunset.

OPTIONAL:

Domestic Flight: Domestic flight to Mfuwe (1 hour). At arrival, you will be welcomed by our guides and transferred to your accommodation.

Accommodation at Wild Dogs Lodge (or similar) in a en-suite chalet. Dinner in Lusaka not included.

B/-/-

Day 10: Lusaka – End of tour

Breakfast at the lodge and free morning. Depending on the time of your international flight, you will be taken to the airport. End of arrangements.

B/-/-

**** OPTIONAL:**

ON DAYS 6 and 9, The itinerary above includes a road transfer from Lusaka to South Luangwa National Park and return. This is a long road transfer (700km, approximately 11 hours) that some travellers may find stressful and exhausting. Alternatively, travellers can choose to add a domestic flight to cover the same distance in less than 1 hour.

Taking a Domestic Flight may allow travellers to connect directly to their international return flight (e.g. depart one day earlier or spend one extra night in South Luangwa National Park). In this case, the cost of the last night in Lusaka will be discounted.

SEASONAL AVAILABILITY:

The Mobile Safari as described in the itinerary is available from MAY 1st to NOVEMBER 30th: The Safari can also be done throughout the year with adjustments to the itinerary depending on the rains.

TOUR SUMMARY:

DAYS: 10

TYPE OF VEHICLE: 4x4 Mobile Safari Vehicle in the wilderness areas. Domestic flights between parks

NO. OF PARTICIPANTS: 2-9

STAFF: English-speaking professional guide – Chef

MEALS: Specified in the itinerary as: B(reakfast) / L(unch) / D(inner)

START: Lusaka

END: Lusaka

DETAILED ITINERARY

Day 1: Lusaka (Travel distance: 40km / 1 hr – Tramac Road)

Upon arrival at Lusaka international airport, you will be welcomed by your guides and assisted in final preparations (local SIM card, forex, etc.) before your Safari starts. Short transfer across town and check-in at Sandy's Creations, a beautiful accommodation immersed in wonderful gardens with two swimming pools, bars and restaurants. Dinner in Lusaka not included.

-/-/-

Day 2: Lower Zambezi Vally – River Safari – Lower Zambezi National Park (Travel distance: 145 km / 2.5 hrs – Tramac Road).

The Lower Zambezi Valley is renowned for its breath-taking views and for the abundance of wildlife that lives along the shores of the Zambezi River. This valley hosts both the Lower Zambezi National Park (on the Zambian shores) and Mana Pools National Park (on the Zimbabwean shores) creating a vast protected area where animals are free to roam without boundaries. This area deserves to be visited both by river and by land in order to fully understand the wild beauty of this place. Lower Zambezi National Park is the most recent park in Zambia and one of the wildest and most picturesque in the whole Africa.

Departure after breakfast towards the Lower Zambezi Valley (160km of tarmac road –

approximately 2 hours), with a en-route visit to the Chirundu Fossil Forest, where you will have the chance to visit a fossil site with petrified trees from more than 160,000,000 years ago and learn a bit more about the history and geography of this area.

You will reach Nsofu Lodge, located at the confluence of the Zambezi and the Kafue rivers, after approximately 30km of gravel road where you will stop to relax while taking in the fantastic view from the panoramic deck.

Lunch (included) at Nsofu Lodge, followed by a breath-taking afternoon boat safari on the Zambezi River rich with all the hippos, crocodiles and elephants populating the river shores.

Your safari will end at Zambezi Wilderness Bushcamp, where you will spend three nights and experience a true Zambian safari experience.

Dinner prepared by your accompanying chef and evening around the fire.

B/L/D

Days 3-4: Lower Zambezi National Park

Wake up and sunrise breakfast.

Immediately as the sun starts rising, you will get on the boat for a short transfer to the National Park's main gate, where you will find our vehicle ready and waiting to take you on a Full-day Gamedrive in the Lower Zambezi National Park with pic-nic lunch in the park. You will be back at the main gate by 16.00 and have a sunset cruise back to the bushcamp.

Dinner prepared by our accompanying chef and evening around the fire.

B/L/D

Day 5: Lower Zambezi National Park – South Luangwa National Park

Sunrise breakfast and transfer to Royal Airstrip, where you will board a domestic flight to South Luangwa National Park.

Our resident guides will collect you from the airport and transfer you to Thornicroft Lodge, where you will spend 1 nights in a Bush-style Chalet, with all meals and game drives offered to you by our resident guides and chefs on board of our vehicles.

Depending on the time of your arrival, it may be possible to have a first Night Drive in the National Park.

Dinner at the lodge.



**“Emotions from the Bush”
Safari - Adventure with
Style**



Day 6: South Luangwa National Park: Mfuwe to Nsefu sectors (Travel distance: 40km / 1.5 hrs – Bush Trails)

South Luangwa National Park is the most famous of National Parks in Zambia due to the abundance of wildlife and the great opportunities to spot large predators. In addition to a large population of felines (mostly leopards and lions), it is home of a large number of elephants, hippos, buffaloes and numerous endemic species such as Thornicroft giraffe, Cookson's wildebeests, Crashway's zebras. The Luangwa River has the highest concentration of hippos and leopards per km² in the whole Africa and offers great reproduction and hunting ground for many animals, such as fish eagles, jackals, hyenas, crocodiles and countless birds. Sunsets on the Luangwa River are unforgettable experiences and the visit to this National Park is considered one of the highlights for any true Africa lover.

Sunrise breakfast and Game drive in the Mfuwe sector of the Park. You will return to Thornicroft lodge around 10,00 and enjoy some relaxing time on the shores of the Luangwa River. After lunch, you will depart for the Nsefu sector of the national park, crossing the Upper Lupande Game Management Area. Afternoon Game Drive in the Nsefu sector of the park before arriving to Nsefu Wilderness bushcamp, where you will spend two nights in one of Zambia's most pristine wilderness areas.

Dinner prepared by our accompanying chef and night around the fire.

B/L/D

Day 7: South Luangwa National Park – Nsefu Sector

Day entirely dedicated to the Game drives activities in the Nsefu Sector of the Park. All meals at the bushcamp.

B/L/D

Day 8: South Luangwa National Park: Nsefu to Mfuwe sectors

Sunrise breakfast and early morning leisure. Brunch, followed by a return transfer to Thornicroft lodge where you will spend another night in a bush-style chalet. Afternoon night drive and dinner prepared by our chef.

B/L/D

Day 9: South Luangwa National Park – Mfuwe Sector

Day entirely dedicated to the Game drives activities in the Mfuwe Sector of the Park. All meals at the lodge prepared by our accompanying chef.

B/L/D

Day 10: Mfuwe – Lusaka: End of tour

Breakfast at the lodge. Depending on the time of your flight you will be taken to Mfuwe airport for a domestic flight to Lusaka (included). Connection with your return international flight. End of arrangements

B/-/-

“Three Rivers” Safari - Rustic

This Safari is dedicated to real wildlife enthusiasts, as it mainly focuses on the three most renowned **National Parks** in Zambia: Kafue, Lower Zambezi and South Luangwa National Park, **including the world-famous Busanga Plains** (when in season). Choose between a **Rustic experience** (camping, road transfers, one location in each park) and an **Adventure with Style** (lodges and remote bush-camps, road and domestic flights and two locations in each park) to further adapt it to your personal preferences.

SEASONAL AVAILABILITY:

The Mobile Safari as described in the itinerary is available from **APRIL 1st to NOVEMBER 30th**. The **BUSANGA PLAINS** are only accessible during **JULY 1st – OCTOBER 31st**, so Safaris in other times of the year will visit other areas of the park.

TOUR SUMMARY:

DAYS: 14

TYPE OF VEHICLE: 4x4 Mobile Safari Vehicle + Minibus transfer between Lusaka and South Luangwa National Park.

NO. OF PARTICIPANTS: 2-6

STAFF: English-speaking professional guide – Chef

MEALS: Specified in the itinerary as: B(reakfast) / L(unch) / D(inner)

START: Lusaka

END: Lusaka

DETAILED ITINERARY

Day 1: Lusaka (Travel distance: 40km / 1 hr – Tarmac Road)

Upon arrival at Lusaka international airport, you will be welcomed by your guides and assisted in final preparations (local SIM card, forex, etc.) before your Safari starts. Short transfer across town and check-in at Sandy's Creations, a beautiful accommodation immersed in wonderful gardens with two swimming pools, bars and restaurants. Dinner in Lusaka not included.

-/-/-



Kafue National Park

Day 2: Kafue National Park – Busanga Plains (Travel distance: 370km / 7 hr – Tarmac Road + Bush Trails)*

*** Note: when other areas of the park are visited, travel distance may vary**

Kafue National Park, extending for 22,400 km², is Africa's second largest National Park and is characterised by many different eco-systems and sceneries. From the southern Nanzhila Plains, to the lake habitat of Itezhi-tezhi, to the fit bush and Miombo forest up to the northern Busanga plains.

Breakfast at the Lodge and departure for Kafue National Park around 07.00. You will reach your camp in the Busanga Plains after approximately 7 hours of driving, depending on road conditions and Game sightings along the way. Depending on the time of travel, en-route Pic-nic lunch in a scenic location within the National Park or once arrived at camp.

Afternoon at leisure after the transfer. Dinner prepared by our accompanying chef and evening around the campfire. Night camping.

B/L/D

Days 3-4: Kafue National Park

Days entirely dedicated to game-viewing activities in the Kafue National Park: either 2 Game drives per day (sunrise and afternoon) or a full-day game drive.

All meals prepared by our accompanying chef and Game drives on board of our vehicles. Evenings will be spent around the campfire and night camping.

B/L/D

Day 5: Kafue – Lusaka (Travel distance: 370km / 7 hr – Tarmac Road + Bush Trails)*

*** Note: when other areas of the park are visited, travel distance may vary**

After Breakfast, a Game Drive will take us back outside of the National Park and onto the main tarmac road. From here, transfer to Lusaka, where we will reach around early afternoon. En-route pic-nic lunch. Upon arrival, you will check in at Sandy's Creations Lodge and have a free leisure afternoon while your guides will get ready for the next part of your trip. Dinner in Lusaka not included. B/L/-

Day 6: Lower Zambezi National Park (Travel distance: 185km / 5 hrs – Tramac Road + Bush Trails)

The Lower Zambezi Valley is renowned for its breathtaking views and for the abundance of wildlife that lives along the shores of the Zambezi River. This valley hosts both the Lower Zambezi National Park (on the Zambian shores) and Mana Pools National Park (on the Zimbabwean shores) creating a vast protected area where animals are free to roam without boundaries. This area deserves to be visited both by river and by land in order to fully understand the wild beauty of this place. Lower Zambezi National Park is the most recent park in Zambia and one of the wildest and most picturesque in the whole Africa.

Departure after breakfast and reach your accommodation after approximately 4 to 5 hours (150km tarmac road + 70km village trails). Set up camp at Mvuu Lodge (a fantastic campsite by the Zambezi river fully equipped with toilets and hot showers) and lunch prepared by our accompanying chef. Afternoon Sunset cruise on the Zambezi River. Dinner by the campfire prepared by our accompanying chef and night camping.

B/L/D

Days 7-8: Lower Zambezi National Park

Wake up and sunrise breakfast.

Full-day Gamedrives in the Lower Zambezi National Park with pic-nic lunch in the park and return to the lodge by sunset.

Dinner prepared by our accompanying chef. Night camping.

B/L/D

Day 9: Lower Zambezi National Park – Lusaka (Travel distance: 220km / 5.5 hrs – Tramac Road + Bush Trails)

Sunrise breakfast and return transfer to Lusaka. Along the way you will visit to a local school and/or the Chirundu Fossils Forest heritage site. Upon arrival you will check in at Wild dogs Camp (or similar), in the northern part of Lusaka and have a free leisure afternoon. Dinner in Lusaka not included.

B/-/-

Day 10: Lusaka – South Luangwa National Park (Travel distance: 700km / 10-11 hrs – Tramac Road)

Very early wake and sunrise breakfast at 05.30 at the lodge. At 06.00 a.m. our minibus will pick you up to start a transfer to Mfuwe – South Luangwa National Park (700km

of tarmac road – approximately 11 hours). Lunch break along the way depending on time (e.g. traditional Zambian meal at a local tavern).

Mfuwe is the closest village from where to access South Luangwa National Park. Even though it is very close to such an internationally acclaimed attraction, it still maintains the spirit and looks of a traditional Zambian village.

Arrival in Mfuwe expected in the afternoon and check-in at Thornicroft Lodge where you will spend three nights in a permanent Safari tent (non en-suite), located in an area fully equipped with ablutions and hot showers. All meals prepared by the accompanying cook and all game viewing activities done by our resident guides on board of our vehicles

Dinner prepared by your accompanying chef.

OPTIONAL:

Domestic Flight: Domestic flight to Mfuwe (1 hour). At arrival, you will be welcomed by our guides and transferred to your accommodation.

B/-/D

Days 11-12: South Luangwa National Park

South Luangwa National Park is the most famous of National Parks in Zambia due to the abundance of wildlife and the great opportunities to spot large predators. In addition to a large population of felines (mostly leopards and lions), it is home of a large number of elephants, hippos, buffaloes and numerous endemic species such as Thornicroft giraffe, Cookson's wildebeests, Crashway's zebras. The Luangwa River has the highest concentration of hippos per km² in the whole Africa and offers great reproduction and hunting ground for many animals, such as fish eagles, jackals, hyenas, crocodiles and countless birds. Sunsets on the Luangwa River are unforgettable experiences and the visit to this National Park is considered one of the highlights for any true Africa lover.

During your stay, you will have 2 game drives per day and all meals at the camp. Nights will be camping around the fire with all meals prepared by the accompanying cook.

B/L/D

Day 13: Mfuwe – Lusaka (Travel distance: 700km / 10-11 hrs – Tramac Road)

Early wake and sunrise breakfast. At 06.00 a.m. you will start off to Lusaka using the same road as per the way there. Lunch break along the way in a local tavern for a

traditional Zambian meal. Arrival in Lusaka expected before sunset.

OPTIONAL:

Domestic Flight: Domestic flight to Mfuwe (1 hour). At arrival, you will be welcomed by our guides and transferred to your accommodation.

Accommodation at Wild Dogs Lodge (or similar) in an en-suite chalet. Dinner in Lusaka not included.

B/-/-

Day 14: Lusaka – End of tour

Breakfast at the lodge and free morning. Depending on the time of your international flight, you will be taken to the airport. End of arrangements.

B/-/



“Three Rivers” Safari - Adventure with Style

SEASONAL AVAILABILITY:

The Mobile Safari as described in the itinerary is available from APRIL 1st to NOVEMBER 30th. The BUSANGA PLAINS are only accessible during JULY 1st – OCTOBER 31st, so Safaris in other times of the year will visit other areas of the park.

TOUR SUMMARY:

DAYS: 14

TYPE OF VEHICLE: 4x4 Mobile Safari Vehicle + Domestic flight between Lusaka and South Luangwa National Park.

NO. OF PARTICIPANTS: 2-6

STAFF: English-speaking professional guide – Chef

MEALS: Specified in the itinerary as: B(reakfast) / L(unch) / D(inner)

START: Lusaka

END: Lusaka

DETAILED ITINERARY

Day 1: Lusaka (Travel distance: 40km / 1 hr – Tarmac Road)

Upon arrival at Lusaka international airport, you will be welcomed by your guides and assisted in final preparations (local SIM card, forex, etc.) before your Safari starts. Short transfer across town and check-in at Sandy's Creations, a beautiful accommodation immersed in wonderful gardens with two swimming pools, bars and restaurants. Dinner in Lusaka not included.

-/-/-

Day 2: Kafue National Park – Northern Kafue / Busanga Plains (Travel distance: 370km / 7 hr – Tarmac Road + Bush Trails)*

*** Note: when other areas of the park are visited, travel distance may vary**

Kafue National Park, extending for 22,400 km², is Africa's second largest National Park and is characterised by many different eco-systems and sceneries. From the

southern Nanzhila Plains, to the lake habitat of Itezhi-tezhi, to the fit bush and Miombo forest up to the northern Busanga plains.

Breakfast at the Lodge and departure by 07.00 for a long transfer to reach the northernmost part of Kafue National Park, with a pic-nic stop along the way inside the National Park.

We will reach Kasonso Busanga Camp in the late morning and check-in this exclusive and remote Camp for an outstanding once-in-a-lifetime experience. Kasonso is an authentic bushcamp that provides all the important fundamentals of a comfortable camp with only 4 tents, each with ensuite bathroom and verandas overlooking the plains.

Lunch at the camp. Afternoon Game drive and return to camp around sunset.

B/L/D

Days 3-4: Kafue National Park – Northern Sector & Busanga Plains

Days entirely dedicated to game-viewing activities in the northern sector of Kafue National Park with 2 game drives per day (sunrise and afternoon).

B/L/D

Day 5: Kafue National Park – Mukambi Safari Lodge (Travel distance: 90 km/ 4 hr – Bush Trails)

Breakfast at the camp and departure through the Kafue National Park to Mukambi Safari lodge, where you spend one night on a full board basis and all activities conducted on board of our safari vehicle. Afternoon Game Drive in the park.

B/L/D

Day 6: Kafue National Park – Lusaka (Travel distance: 275 km / 4 hr – Tarmac Road)

Breakfast at the Lodge and departure for Lusaka. You will reach Sandy's Creations after approximately 4 hours and check-in for one night on a B&B rate. Afternoon at leisure.

Lunch and Dinner in Lusaka not included.

B/-/-

Day 7: Lower Zambezi Vally – River Safari – Lower Zambezi National Park (Travel distance: 145 km / 2.5 hrs – Tarmac Road).

The Lower Zambezi Valley is renowned for its breathtaking views and for the abundance of wildlife that lives along the shores of the Zambezi River. This valley hosts both the Lower Zambezi National Park (on the Zambian



shores) and Mana Pools National Park (on the Zimbabwe shores) creating a vast protected area where animals are free to roam without boundaries. This area deserves to be visited both by river and by land in order to fully understand the wild beauty of this place. Lower Zambezi National Park is the most recent park in Zambia and one of the wildest and most picturesque in the whole Africa.

Departure after breakfast towards the Lower Zambezi Valley (160km of tarmac road – approximately 2 hours), with a en-route visit to the Chirundu Fossil Forest, where you will have the chance to visit a fossil site with petrified trees from more than 160,000,000 years ago and learn a bit more about the history and geography of this area.

You will reach Nsofu Lodge, located at the confluence of the Zambezi and the Kafue rivers, after approximately 30km of gravel road where you will stop to relax while taking in the fantastic view from the panoramic deck.

Lunch (included) at Nsofu Lodge, followed by a breathtaking afternoon boat safari on the Zambezi River rich with all the hippos, crocodiles and elephants populating the river shores.

Your safari will end at Zambezi Wilderness Bushcamp, where you will spend three nights and experience a true Zambian safari experience.

Dinner prepared by your accompanying chef and evening around the fire.

B/L/D

Days 8-9: Lower Zambezi National Park

Wake up and sunrise breakfast.

Immediately as the sun starts rising, you will get on the boat for a short transfer to the National Park's main gate, where you will find our vehicle ready and waiting to take you on a Full-day Gamedrive in the Lower Zambezi National Park with pic-nic lunch in the park. You will be back at the main gate by 16.00 and have a sunset cruise back to the bushcamp.

Dinner prepared by our accompanying chef and evening around the fire.

B/L/D

Day 10: Lower Zambezi National Park – South Luangwa National Park

Sunrise breakfast and transfer to Royal Airstrip, where you will board a domestic flight to South Luangwa National Park.

Our resident guides will collect you from the airport and transfer you to Thornicroft Lodge, where you will spend 1 nights in a Luxury Chalet on a "Safari" package, inclusive of all meals and 2 Game Drives.

Depending on the time of your arrival, it may be possible to have a first Night Drive in the National Park.

Dinner at the lodge.

B/-/D

Day 11: South Luangwa National Park: Mfuwe to Nsefu sectors (Travel distance: 40km / 1.5 hrs – Bush Trails)

South Luangwa National Park is the most famous of National Parks in Zambia due to the abundance of wildlife and the great opportunities to spot large predators. In addition to a large population of felines (mostly leopards and lions), it is home of a large number of elephants, hippos, buffaloes and numerous endemic species such as Thornicroft giraffe, Cookson's wildebeests, Crashway's zebras. The Luangwa River has the highest concentration of hippos and leopards per km² in the whole Africa and offers great reproduction and hunting ground for many animals, such as fish eagles, jackals, hyenas, crocodiles and countless birds. Sunsets on the Luangwa River are unforgettable experiences and the visit to this National Park is considered one of the highlights for any true Africa lover.

Sunrise breakfast and Game drive in the Mfuwe sector of the Park. You will return to Thornicroft lodge around 10,00 and enjoy some relaxing time on the shores of the Luangwa River. After lunch, you will depart for the Nsefu sector of the national park, crossing the Upper Lupande Game Management Area. Afternoon Game Drive in the Nsefu sector of the park before arriving to Nsefu Wilderness bushcamp, where you will spend two nights in one of Zambia's most pristine wilderness areas.

Dinner prepared by our accompanying chef and night around the fire.

B/L/D

Day 12: South Luangwa National Park – Nsefu Sector

Day entirely dedicated to the Game drives activities in the Nsefu Sector of the Park. All meals at the bushcamp.

B/L/D

Day 13: South Luangwa National Park: Nsefu to Mfuwe sectors

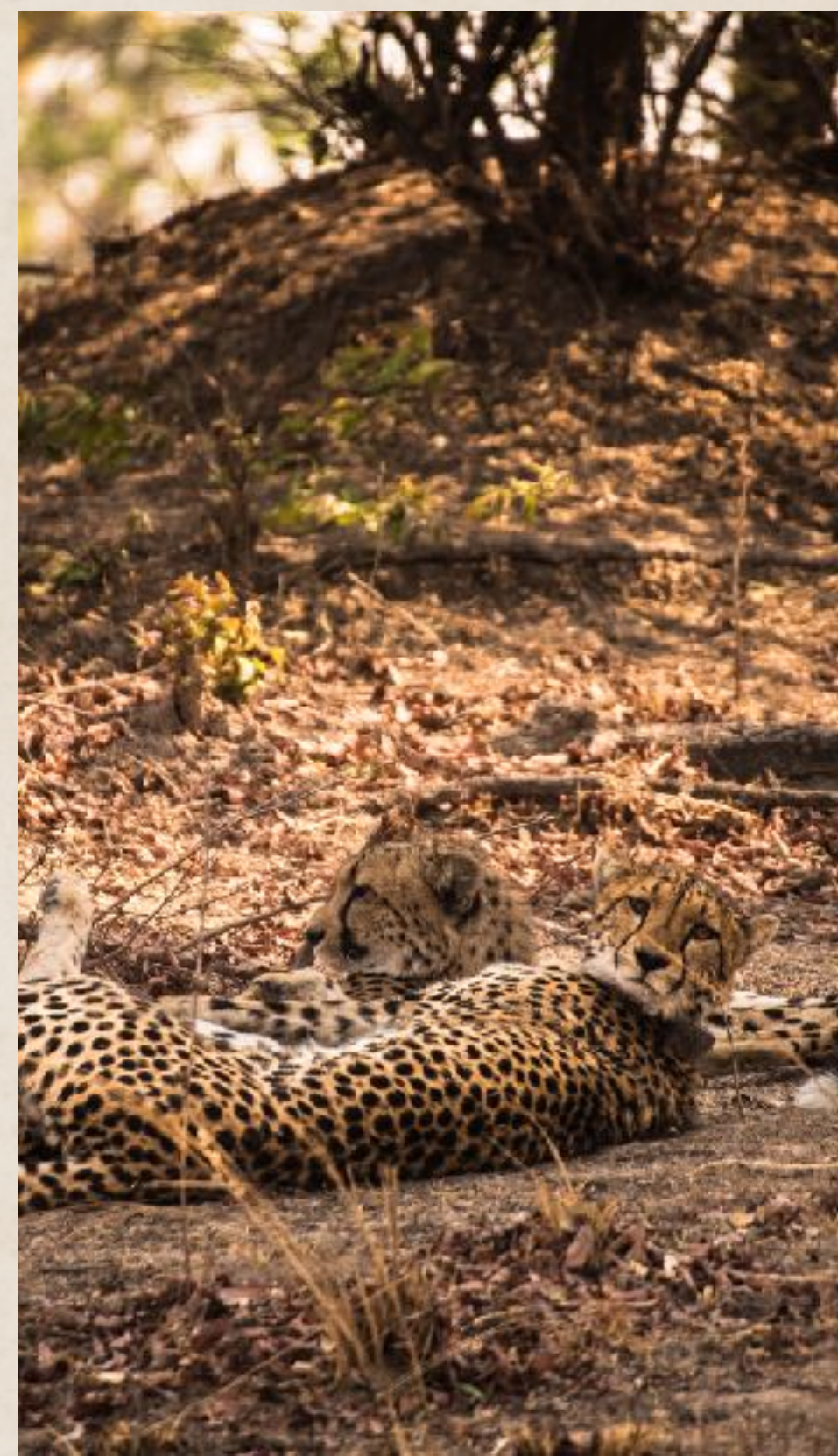
Sunrise breakfast and early morning leisure. Brunch, followed by a return transfer to Thornicroft lodge where you will spend another night in a Luxury chalet with a Safari Package. Afternoon night drive and dinner at the lodge.

B/L/D

Day 14: Mfuwe – Lusaka: End of tour

Breakfast at the lodge. Depending on the time of your flight you will be taken to Mfuwe airport for a domestic flight to Lusaka (included). Connection with your return international flight. End of arrangements

B/-/-



“Northern Route” Safari

Description:

A **Classic Zambian Safari** completely off the beaten path that combines **incredible landscapes, history, genuine cultural experience and teeming wildlife** for the real Africa lovers. All bookings above 3 participants will be accompanied by a support vehicle.

SEASONAL AVAILABILITY:

The Mobile Safari as described in the itinerary is only available between JUNE 1st and OCTOBER 31st.

Between October 15th and the end of December, about 10 million fruit bats migrate from all of Africa to the Kasanka National Park: this incredible spectacle of Nature represents the world's largest mammal migration and it's a once-in-a-lifetime experience that must be witnessed in person to fully appreciate the grandiosity and the scale of this migration!

TOUR SUMMARY:

DAYS: 13

TYPE OF VEHICLE: 4x4 Mobile Safari Vehicle + Support vehicles for Safaris with 4 pax and above.

NO. OF PARTICIPANTS: 2-9

STAFF: English-speaking professional guide – Chef

MEALS: Specified in the itinerary as: B(reakfast) / L(unch) / D(inner)

START: Lusaka

END: Lusaka

ACCOMMODATION: Lodging in Lusaka. Camping during the tour and in the national parks.

DETAILED ITINERARY

Day 1: Lusaka (Travel distance: 40km / 1 hr – Tarmac Road)

Upon arrival at Lusaka international airport, you will be welcomed by your guides and assisted in final preparations (local SIM card, forex, etc.) before your Safari starts. Short transfer across town and check-in at Sandy's Creations, a beautiful accommodation immersed

in wonderful gardens with two swimming pools, bars and restaurants. Dinner in Lusaka not included.

-/-

Day 2: Kasanka National Park (Travel distance: 550km / 7-9 hr – Tarmac Road)

Kasanka National Park is a small yet very interesting National Park in the northern region of Zambia. It is home to some of the most unique wetlands of the region including the Bangweulu swamp, the so called “Zambian Okavango”. Here, we can have the chance to see some rare endemic antelopes, such as the water-based Sitatunga, and the rare Shoe-billed stork. Also, in the region, is located the mausoleum where David Livingstone died and where his heart was buried.

Departure from Lusaka before sunrise and packed breakfast along the way. It is very important to leave the Hotel before 06.00 a.m. in order to avoid the traffic of the rush hours around the capital city, that could have a negative impact on the driving time to destination. Lunch break along the way in a local tavern before proceeding to Kasanka National Park. Upon arrival (approximately 500km, mainly tarmac road, 7 to 9 hours depending on road conditions), a short game drive will bring us to our campsite where we will camp for the next two nights, with all meals prepared by our accompanying chef. Dinner around the campfire prepared by our accompanying chef and night camping.

B/L/D

Day 3: Kasanka National Park

During this day you will enjoy either a Sitatunga Game Drive (to try and spot the rare and endemic Sitatunga antelope) and a Walking Safari (June to September) or a Unique Bat Experience involving Bat viewing and Bat walks. Lunch and Dinner prepared by our accompanying chef and night camping.

B/L/D

Day 4: Kasanka National Park – Kundalila Falls (Travel distance: 115km / 2.5 hr – Tarmac Road + Gravel Road) – Mutinondo Wilderness (Muchinga Escarpment) (Travel distance: 140km / 3.5 hr – Tarmac Road + Gravel Road)

We will leave Kasanka at sunrise and start heading north-east. Along the way we will stop to visit Kundalila Falls while having a pic-nic lunch. The day will end in the astonishing surroundings of Mutinondo Wilderness, a wild area on the Muchinga Escarpment where nature rules untouched. Set up camp in a scenic campsite and dinner prepared by our accompanying chef.

B/L/D

Day 5: Mutinondo Wilderness (Muchinga Escarpment)

Mutinondo Wilderness is paradise for the free spirits who want to hike, swim, cycle and generally celebrate pristine miombo woodland, streams, waterfalls and inselbergs, over 60 km of well-maintained and signed tracks, and views from horizon to horizon without evidence of human activity. Mutinondo is unique in that it is a proper wilderness where you can hike freely, swim in rivers and waterfalls and enjoy nature at its best.

All meals prepared by our accompanying chef and activities to be determined on site.

B/L/D

Day 6: Nachifuku Caves - Shiwa N'gandu - Kapishya Hot Springs (Travel distance: 220km / 4.5 hr – Tarmac Road + Gravel Road)

Sunrise breakfast and early departure. After leaving Mutinondo we proceed north up towards Mpika, where we will stop for a quick visit to Nachifuku Caves, a site with magnificent rock paintings protected by UNESCO. Afterwards, we will proceed to the unbelievable Shiwa N'gandu mansion, an incredible piece of colonial history in the African bush. We will set our camp for two nights at the Kapishya hot springs, where it is possible to enjoy the thermal waters for a hot and reinvigorating night-bath. Night will be spent camping, and our chef will take care of all meals.

B/L/D

Day 7: Shiwa N'gandu

Morning breakfast followed by a visit of Shiwa N'gandu, a real piece of colonial history in the heart of the African bush. Here we will discover the history of Sir Gore-Brown and his fundamental importance to the history of Zambia. Return to camp for lunch and afternoon at leisure to enjoy the Hotsprings or a Game drive in the property facing Lake Shiwa. Dinner by the fire.

B/L/D

Days 8-9: North Luangwa National Park (Travel distance: 200km / 5-6 hr – Bush Trails)

Early breakfast and departure for a transfer through the whole North Luangwa National Park. After 60km of tarmac road, we will enter the Muchinga escarpment bush and proceed down the mountains to the North Luangwa National Park.

This remote tract of land, covering 4636 square kilometres, offers one of the finest wilderness experiences in Zambia, if not Africa itself. It is not open to the public and there are no permanent lodges there. Access is with one of the few safari operators granted permission to conduct walking safaris.

The beauty of visiting this Park is the truly remarkable opportunities to experience Africa as it was. It is wild and untouched and you are simply an unobtrusive witness to its natural beauty and drama. Although declared a wilderness area, the North Park, was not open to anyone other than Game Department rangers for more than thirty years. In 1984, Major John Harvey and his wife Lorna sought permission to conduct walking safaris in the area and for many years were the only operators in this remote wilderness.

Then in 1989, two scientists, Mark and Delia Owens, famous for their book 'Cry of the Kalahari', were granted permission to set up a research station in the Park. Through their influence and as a means of helping to curb poaching in the area, the authorities allowed entry to a few more safari operators who bring limited numbers into the Park for guided walking safaris and game drives. Their efforts in the North Luangwa are documented in their book 'Survivors Song / The Eye of the Elephant'.

There are very few roads and you are unlikely to see anyone else for the duration of your trip. Like the South Park, it lies on the western bank of the Luangwa River bordered on the other side by the dramatic Muchinga Escarpment which rises over 1000 meters from the valley floor. Its hazy outline can clearly be seen from the Luangwa River.

There are a number of tributary rivers running through the Park and into the Luangwa which play an important ecological role in the area. The crystal-clear Mwaleshi River trickles down the escarpment in a series of small waterfalls. It recedes in the dry season, leaving many pools along the way, drawing the animals from the bush to its banks in search of water. No game drives are permitted in the Mwaleshi area, and access is by organized walking safaris only.

The vegetation ranges from mopane woodland to riverine forest, open grasslands and acacia thicket. Trees include the beautiful sausage tree, vegetable ivory palms, red mahogany and leadwood.

Pic nic lunch along the Luangwa river before proceeding through the National park to the Southern Gate.

After crossing the Luangwa River, we will set up camp in a scenic campsite on the river shores and spend a Night camping.

On our second day, you will enjoy 2 spectacular Walking safari in the national park.

All meals prepared by our accompanying chef and night lodging.

B/L/D

Day 10 – North Luangwa National Park – Luambe National Park – South Luangwa National Park (Travel distance: 220km / 10 hr – Bush Trails)

Early wake and sunrise breakfast before starting off towards South Luangwa National Park crossing the entire Luangwa Valley and Luambe National Park.

The distance, although only 240km, is likely to take the whole day due to the roughness of the road conditions and the chances to spot wildlife along the way.

At just 254 km², Luambe is one of Zambia's smallest national parks. Situated on the eastern bank of the Luangwa it lies in the heart of the Luangwa valley between Lukusuzi, North and South Luangwa national parks. The park was declared in 1938 and is therefore one of the oldest conservation areas in Zambia.

The wildlife found in Luambe is similar to that of its larger neighbouring parks and includes all the typical large herbivores, carnivores as well as some less well-known species. However, the animals of Luambe are generally present at lower densities than in the bigger parks with the advantage that Luambe is less crowded than its more famous neighbours.

Habitat diversity in Luambe National Park is enormous and within a few kilometres the vegetation ranges from riverine forest, cathedral mopane woodland, floodplain acacia thickets to the sausage tree-dotted open grasslands of the Chipuka plains.

There are over 200 species of bird in Luambe and elephant populations as well as those of lion and leopard are said to be on the increase – so it's well worth visiting now before everyone else catches on.

You will stop for a pic-nic lunch inside Luambe National Park before proceeding further South and reaching the Nsefu Sector of South Luangwa National Park for yet more opportunities for excellent game viewing.

We plan to arrive to Mfuwe before sunset and check-in at Thornicroft Lodge where you will spend three nights in a permanent Safari tent (non en-suite), located in an area fully equipped with ablutions and hot showers. All meals prepared by the accompanying cook and all game viewing activities done by our resident guides on board of our vehicles

Dinner prepared by your accompanying chef.

B/L/D

Days 11-12: South Luangwa National Park

South Luangwa National Park is the most famous of National Parks in Zambia due to the abundance of wildlife and the great opportunities to spot large predators. In addition to a large population of felines (mostly leopards and lions), it is home of a large number of elephants, hippos, buffaloes and numerous endemic species such as Thornicroft giraffe, Cookson's wildebeests, Crashway's zebras. The Luangwa river has the highest concentration of hippos per km² in the whole Africa and offers great reproduction and hunting ground for many animals, such as fish eagles, jackals, hyenas, crocodiles and countless birds. Sunsets on the Luangwa river are unforgettable experiences and the visit to this National Park is considered one of the highlights for any true Africa lover.

During your stay, you will have 2 game drives per day and all meals at our camp. Nights will be in non en-suite Safari tents with a full-board arrangement prepared by your accompanying chef.

B/L/D

Day 13: South Luangwa National Park – Lusaka. End of Safari

Breakfast at the lodge. Depending on the time of your flight you will be taken to Mfuwe airport for a domestic flight to Lusaka (included). Connection with your return international flight. End of arrangements

B/-/-

“Western Route” Safari

DESCRIPTION:

A camping Mobile Safari specifically dedicated to the discovery of the **Western region of Zambia, by far the wildest and less touristic!** Here, you will discover some spectacular hidden gems, such as the fantastic LIUWA PLAINS National Park, where every year - between November and December - **tens of thousands of blue wildebeests** gather in the floodplains in search of food and water, followed by huge packs of hyenas, cheetahs, lions and multiple other predators, such as wild dogs, jackals, and many more. This is the world's second largest wildebeests migration, following the one between Serengeti and Masai Mara. On top of this incredibly rich Cultural event, the Safari also includes a visit to the Victoria Falls, Mosi-oa-Tunya National Park, Ngonye Falls and Kafue National Park for a diverse and variegated experience!

NOTES ON SEASONAL AVAILABILITY:

The Mobile Safari as described in the itinerary is available from MAY 1st to DECEMBER 15th. Between November and December 15th, the Liuwa Plains are the scenery of a fantastic wildebeests migration (the second largest wildebeests migration of the African continent).



DETAILED ITINERARY

DAYS: 12

TYPE OF VEHICLE: 4x4 Mobile Safari Vehicle

NO. OF PARTICIPANTS: 2-9

STAFF: English-speaking professional guide – Chef

MEALS: Specified in the itinerary as: B(reakfast) / L(unch) / D(inner)

START: Lusaka

END: Livingstone - NOTE: This Itinerary can also be done the other way around (Livingstone to Lusaka) at no additional cost.

ACCOMMODATION: Lodging in Lusaka, Mongu and Livingstone. Camping in Kafue, Liuwa Plains and Ngonye Falls.

DETAILED ITINERARY

Day 1: Lusaka (Travel distance: 40km / 1 hr – Tarmac Road)

Upon arrival at Lusaka international airport, you will be welcomed by your guides and assisted in final preparations (local SIM card, forex, etc.) before your Safari starts. Short transfer across town and check-in at Sandy's Creations, a beautiful accommodation immersed in wonderful gardens with two swimming pools, bars and restaurants. Dinner in Lusaka not included.

-/-/-

Day 2: Kafue National Park – Busanga Plains (Travel distance: 370km / 7 hr – Tarmac Road + Bush Trails)*

* Note: when other areas of the park are visited, travel distance may vary

Kafue National Park, extending for 22,400 km², is Africa's second largest National Park and is characterised by many different eco-systems and sceneries. From the southern Nanzhila Plains, to the lake habitat of Itezhi-tezhi, to the fit bush and Miombo forest up to the northern Busanga plains.

Breakfast at the Lodge and departure for Kafue National Park around 07.00. You will reach your camp in the Busanga Plains after approximately 7 hours of driving, depending on road conditions and Game sightings along the way. Depending on the time of travel, en-route Pic-nic lunch in a scenic location within the National Park or once arrived at camp.

Afternoon at leisure after the transfer. Dinner prepared by our accompanying chef and evening around the campfire. Night camping.

B/L/D

Days 3-4: Kafue National Park

Days entirely dedicated to game-viewing activities in the Kafue National Park: either 2 Game drives per day (sunrise and afternoon) or a full-day game drive.

All meals prepared by our accompanying chef and Game drives on board of our vehicles. Evenings will be spent around the campfire and night camping.

B/L/D

Day 5: Kafue National Park – Mongu (Travel distance: 400km / 8 hr – Tarmac Road)

After Breakfast, a Game Drive will take us back outside of the National Park and onto the main tarmac road. From here, transfer to Mongu (in total, approximately 7 hours, depending on road conditions), where we will check-in at a local guesthouse (en-suite). The rest of the day is available for relax while your guides will take care of the supplies for the next leg of your tour.

B/-/-

Day 6: Liuwa Plains (Travel distance: 100km / 4 hr – Tarmac Road + Bush Trails + Deep Sand)

The Liuwa Plains National Park is one of Africa's most remote destinations and a true wilderness area. The landscape, usually flat and barren, with the first November rains start covering up with grass and a multitude of flowers attracting thousands of Wildebeests from other areas of Zambia and the neighbouring Angola. Together with the wildebeests, a large population of hyenas, jackals, cheetahs and lions come to populate the plains and join the resident zebras, buffalos, and many other herbivores. The quantity and diversity of birdlife is also spectacular, and it represents one of the main attractions of this park. Departure immediately after breakfast for Liuwa Plains N.P. Long Game-viewing activity en-route to our campsite and arrival around lunch time. Camp will be set in one of the three community campsite and lunch. Afternoon game drive and return to camp around sunset. Dinner around the fire and night camping.

Attention: Liuwa Community Campsites are extremely remote areas, without access to drinking water, electricity, nor hot water. Most campsites have a proper toilet and cold shower, while the most remote campsites only have a drop toilet and bucket shower.

B/L/D

Days 7-8: Liuwa Plains

Early morning wake and breakfast. Sunrise game-drive in the park. Return to camp after approximately 4 hours and relax. Lunch followed by an afternoon game drive ending around sunset. Dinner prepared by our accompanying chef on the campfire and night camping.

B/L/D

Day 9: Ngonye Falls (Travel distance: 300km / 5-6 hr – Sand + Bush Trails + Tarmac Road)

Early wake and sunrise breakfast. Break down camp and transfer on sandy and gravel roads up to Mongu. From there, we will continue south on a tarmac road to the Ngonye Falls, where we will spend a night camping in the picturesque Ngonye Camp. Lunch break along the way, depending on time. Night camping and dinner around the fire.

B/L/D

Day 10: Ngonye Falls – Livingstone (Travel distance: 350km / 7 hr – Tarmac Road)

Sunrise breakfast and guided tour of the Ngonye Falls, involving a short boat cruise among the rapids of the Zambezi river and a short trekking expedition. The Ngonye Falls are one of Zambia's Hidden Gems, where Dr. Livingstone stopped for months, charmed by their beauty, before proceeding to discover the more famous Victoria Falls. Return to our camp for a quick brunch and, in the afternoon, 350km transfer to Livingstone (approx. 6-7 hours due to the road conditions). Check-in at Maramba River Lodge in en-suite Safari Chalet.

B/L/-

Day 11: Victoria Falls / Mosi-oa-Tunya National Park

Breakfast at the lodge and guided tour of the Victoria Falls from the Zambian side. Return to Livingstone for lunch (not included) and afternoon Rhino Game Drive in the Mosi-Oa-Tunya National Park aiming to find the last remaining white Rhinos in Zambia. Own arrangements for dinner and night at the lodge.

B/-/-

Day 12: End of Tour

Breakfast at the lodge. Based on return flight, you will be taken to the airport. End of arrangements

B/-/-





Focus Safaris

“Complete Kafue” Safari - Rustic

Description:

A **fully customisable Safari** in wild **Kafue National Park**. Choose your starting and ending point, your category of comfort (**Rustic** or **Adventure with Style**), the **number of days** for an experience perfectly tailored to your specific needs

NOTES ON SEASONAL AVAILABILITY:

The Mobile Safari as described in the itinerary is only available between MARCH 1st and NOVEMBER 30th

BUSANGA PLAINS are only accessible between July 1st and October 31st. During other times of the year, the Safari will visit a different area of the Park.

EARLY SEASON (March-April): In case of exceptional rains that washed away bridges or destroyed roads, some parts of the journey may need to be adapted.

SAFARI OVERVIEW

DAYS: 8 days / 7 nights

TYPE OF VEHICLE: 4x4 Mobile Safari Vehicle

NO. OF PARTICIPANTS: 2-6 (up to 9 pax can be accommodated on request)

STAFF: English-speaking professional guide – Chef

MEALS: Specified in the itinerary as: B(reakfast) / L(unch) / D(inner)

START: Livingstone

END: Lusaka - NOTE: This Itinerary can also be done the other way around (Lusaka to Livingstone) at no additional price.

ACCOMMODATION: Camping in Kafue National Park

DETAILED ITINERARY

Day 1: Livingstone - Kafue National Park – Southern sector / Lake Itezhi tezhi (Travel distance: 340km / 5 hr – Tramac Road + Gravel Road)

Kafue National Park, extending for 22,400 km², is Africa's second largest National Park and is characterised by many different eco-systems and sceneries. From the southern Nanzhila Plains, to the lake habitat of Itezhi-tezhi, to the fit bush and Miombo forest up to the northern Busanga plains.



During your Safari in the park, you will cross the whole National Park from South to North, camping in some of the most spectacular places and conducting numerous Game Drives in each area.

Our vehicle will pick you up from your accommodation in Livingstone at 06,30 and departure for a 120km transfer on tarmac road to Kalomo. Here, we will take a gravel road for 80km to the Southern Gate of the National Park. (Dumdumwezi). We will then proceed north inside the National Park on a new gravel road until we will reach Lake Itezhi-tezhi. The whole transfer will take approximately 5 hours (depending on road conditions). Set up camp at Hippo Bay in a fully equipped area with toilets and hot showers. Lunch prepared on arrival by our accompanying chef. Afternoon Game drive and return to

camp around sunset. Dinner prepared by our accompanying chef and night camping around the fire.

B/L/D

Day 2: Kafue National Park – Southern Sector / Lake Itezhi-tezhi

Early wake and breakfast. Sunrise Game Drive in the park and return to camp after approximately 4 hours. Relax and Lunch. In the afternoon, Game-drive until sunset and dinner by the campfire. Night camping.

Optional: upon request, it is possible to visit a near-by *Elephant Sanctuary* where orphan elephants are welcomed and protected by volunteers. This Sanctuary is located inside the park, close to our Campsite. B/L/D



Kafue National Park

**Day 3: Kafue National Park – Central Sector / Shishamba river
(Travel distance: 130km / 4 hr – Gravel Road)**

Wake up at sunrise and breakfast. Break of camp and departure along the Spinal road inside the National Park proceeding north with good opportunities to spot wildlife along the way.

We will reach Kasabushi after approximately 3 hours and set the camp. In the afternoon, we will have a spectacular river safari on the Kafue river which, in this area, is decorated by many rocks and rapids, and hosts a multitude of wildlife and birds. Return to camp before sunset. Dinner prepared by our accompanying chef on the camp fire and night camping.

B/L/D

Day 4: Kafue National Park – Central Sector/ Shishamba river

Early wake and sunrise departure for a full day game drive on the dry bed of the Shishamba River, with excellent chances of spotting feline predators. Pic-nic lunch during the game drive and return to camp before sunset. Dinner around the campfire and night camping.

B/L/D

**Day 5: Kafue National Park – Northern Sector / Busanga Plains
(Travel distance: 130km / 4 hr –Gravel Road)**

Early morning wake and breakfast. Break camp and departure to the northern sector of the park continuing along the Spinal road with good opportunities of spotting wildlife along the way. We will reach Bongololo Campsite in the late morning and set up our camp for the following three nights in a fully equipped camping area with toilets and hot showers. Lunch is prepared on arrival by our accompanying chef. Afternoon Game drive and return to camp around sunset. Dinner prepared by our accompanying chef and night camping around the fire.

B/L/D

Days 6-7: Kafue National Park – Northern Sector & Busanga Plains

Days entirely dedicated to game-viewing activities in the Kafue National Park: either 2 Game drives per day (sunrise and afternoon) or a full-day game drive (Busanga Plains accessibility: July 1st – October 31st). Evenings will be spent around the campfire and night camping.

B/L/D

Day 8: Kafue National Park –Lusaka (Travel distance: 370km / 7 hr – Tarmac Road + Bush Trails)

Early wake and sunrise breakfast. Break of camp and transfer to Lusaka where we will reach around lunchtime. Upon arrival, you will be dropped off at a location of your choice. End of arrangements.

B/-/-

“Complete Kafue” Safari - Adventure with Style

NOTES ON SEASONAL AVAILABILITY:

The Mobile Safari as described in the itinerary is only available between MARCH 1st and NOVEMBER 30th

BUSANGA PLAINS are only accessible between July 1st and October 31st. During other times of the year, the Safari will visit a different area of the Park.

EARLY SEASON (March-April): In case of exceptional rains that washed away bridges or destroyed roads, some parts of the journey may need to be adapted.

SAFARI OVERVIEW

DAYS: 8 days / 7 nights

TYPE OF VEHICLE: 4x4 Mobile Safari Vehicle

NO. OF PARTICIPANTS: 2-6 (up to 9 pax can be accommodated on request)

STAFF: English-speaking professional guide – Chef

MEALS: Specified in the itinerary as: B(reakfast) / L(unch) / D(inner)

START: Livingstone

END: Lusaka - NOTE: This Itinerary can also be done the other way around (Lusaka to Livingstone) at no additional price.

ACCOMMODATION: Exclusive lodging

DETAILED ITINERARY

Day 1: Livingstone - Kafue National Park – Southern sector / Lake Itezhi tezhi (Travel distance: 340km / 5 hr – Tramac Road + Gravel Road)

Kafue National Park, extending for 22,400 km², is Africa's second largest National Park and is characterised by many different eco-systems and sceneries. From the southern Nanzhila Plains, to the lake habitat of Itezhi-tezhi, to the fit bush and Miombo forest up to the northern Busanga plains.

During your Safari in the park, you will cross the whole National Park from South to North, camping in some of the most spectacular places and conducting numerous Game Drives in each area.

Our vehicle will pick you up from your accommodation in Livingstone at 06,30 and departure for a 120km transfer on tarmac road to Kalomo. Here, we will take a gravel road for 80km to the Southern Gate of the National Park. (Dumdumwezi). We will then proceed north inside the National Park on a new gravel road until we will reach



Kafue National Park

Lake Itezhi-tezhi. The whole transfer will take approximately 5 hours (depending on road conditions).

You will check-in in the majestic surroundings of Nanzhila Lake Camp, a fantastic property on the shores of Lake Itezhi-tezhi consisting of only 3 tents under thatch, with flushing toilets and hot water provided by donkey boilers. There's no electricity nor Wi-Fi in the camp (plugs for charging are available at the main lapa) and illumination is provided by lanterns, contributing to an exclusive safari experience. Full board at the camp and safari activities on board of our vehicles.

Afternoon Game drive and return to camp around sunset. Dinner at the lodge.

B/L/D

Day 2: Kafue National Park – Southern sector / Lake Itezhi tezhi

Day entirely dedicated to the exploration of Southern Kafue around lake Itezhi-tezhi with 2 game drives and all meals at the Camp.

B/L/D

Day 3: Kafue National Park – Central Sector/ Shishamba river (Travel distance: 130km / 4 hr – Gravel Road)

Wake up at sunrise and breakfast. Break of camp and departure along the Spinal road inside the National Park proceeding north with good opportunities to spot wildlife



along the way.

We will reach Mwamfushi Lodge after approximately 3 hours and check-in in exclusive chalets on the Kafue River. In the afternoon, we will have a spectacular river safari on the Kafue river which, in this area, is decorated by many rocks and rapids, and hosts a multitude of wildlife and birds. Return to camp before sunset.

B/L/D

Day 4: Kafue National Park – Central Sector/Shishamba river

Early wake and sunrise departure for a full day game drive on the dry bed of the Shishamba River, with excellent chances of spotting feline predators. Pic-nic lunch during the game drive and return to camp before sunset.

B/L/D

Day 5: Kafue National Park – Northern Sector / Busanga Plains (Travel distance: 130km / 4 hr –Gravel Road)

Early morning wake and breakfast. Departure to the northern sector of the park continuing along the Spinal road with good opportunities of spotting wildlife along the way. We will reach Kasonso Busanga Camp in the late morning and check-in this exclusive and remote Camp for an outstanding once-in-a-lifetime experience. Kasonso is an authentic bushcamp that provides all the important fundamentals of a comfortable camp with only 4 tents, each with ensuite bathroom and verandas overlooking the plains.

Lunch at the camp. Afternoon Game drive and return to camp around sunset.

B/L/D

Days 6-7: Kafue National Park – Northern Sector & Busanga Plains

Days entirely dedicated to game-viewing activities in the northern sector of Kafue National Park with 2 game drives per day (sunrise and afternoon).

B/L/D

Day 8: Kafue National Park –Lusaka (Travel distance: 370km / 7 hr – Tarmac Road + Bush Trails)

Early wake and sunrise breakfast. Transfer to Lusaka where we will reach around lunchtime on in the early afternoon. Upon arrival, you will be dropped off at a location of your choice. End of arrangements.

B/-/-

“Complete South Luangwa” Safari

Description:

South **Luangwa National Park** is also called “**The Valley of Leopards**” for the **abundance of its feline predators**. This safari visits **three different locations** within the Park.

SEASON AVAILABILITY

The Mobile Safari as described in the itinerary is available from MAY to NOVEMBER.

SAFARI OVERVIEW

DAYS: 8

TYPE OF VEHICLE: 4x4 Mobile Safari Vehicle / Game viewer

NO. OF PARTICIPANTS: 2-6

STAFF: English-speaking professional guide – Chef

MEALS: Specified in the itinerary as: B(reakfast) / L(unch) / D(inner)

START: Mfuwe

END: Mfuwe (NOTE: this safari can also start and end in Lusaka, Lilongwe or Chipata. Please enquire for rates)

ACCOMMODATION: Exclusive lodging (NOTE: Camping available as alternative)

DETAILED ITINERARY

Day 1: South Luangwa National Park – Mfuwe Sector

Your Safari begins in Mfuwe (**NOTE:** this safari can also start from Lusaka, Lilongwe or Chipata. Please enquire for rates).

Mfuwe is the closest village from where to access South Luangwa National Park. Even though it is very close to such an internationally acclaimed attraction, it still maintains the spirit and looks of a traditional Zambian village.

Upon arrival, you will be welcomed by your guides and transferred to **THORNICROFT LODGE**, where you will spend three nights in an en-suite Bush-style Chalet, with all meals prepared by the accompanying cook and all game viewing activities done by our resident guides on board of our vehicles.

If time allows, you can enjoy a first game drive in the afternoon.

-/-/D

Days 2-3: South Luangwa National Park – Mfuwe Sector

South Luangwa National Park is the most famous of National Parks in Zambia due to the abundance of wildlife and the great opportunities to spot large predators. In addition to a large population of felines (mostly leopards and lions), it is home of a large number of elephants, hippos, buffaloes and numerous endemic species such as Thornicroft giraffe, Cookson’s wildebeests, Crashway’s zebras. The Luangwa River has the highest concentration of hippos per km² in the whole Africa and offers great reproduction and hunting ground for many animals, such as fish eagles, jackals, hyenas, crocodiles and countless birds. Sunsets on the Luangwa River are unforgettable experiences and the visit to this National Park is considered one of the highlights for any true Africa lover.

Early wake and sunrise breakfast with hot beverages and toasts/biscuits before starting off on your first Game drive of the day. Return to camp around 10,00 and time to relax. Brunch, followed by an afternoon Night Drive that will continue after sunset to maximise your chances to spot nocturnal predators.

Travellers can choose to replace one of the two morning Game Drives with a Walking Safari, to fully experience the wilderness of this area from a different perspective.

Dinner at camp, prepared by the accompanying cook and night lodging.

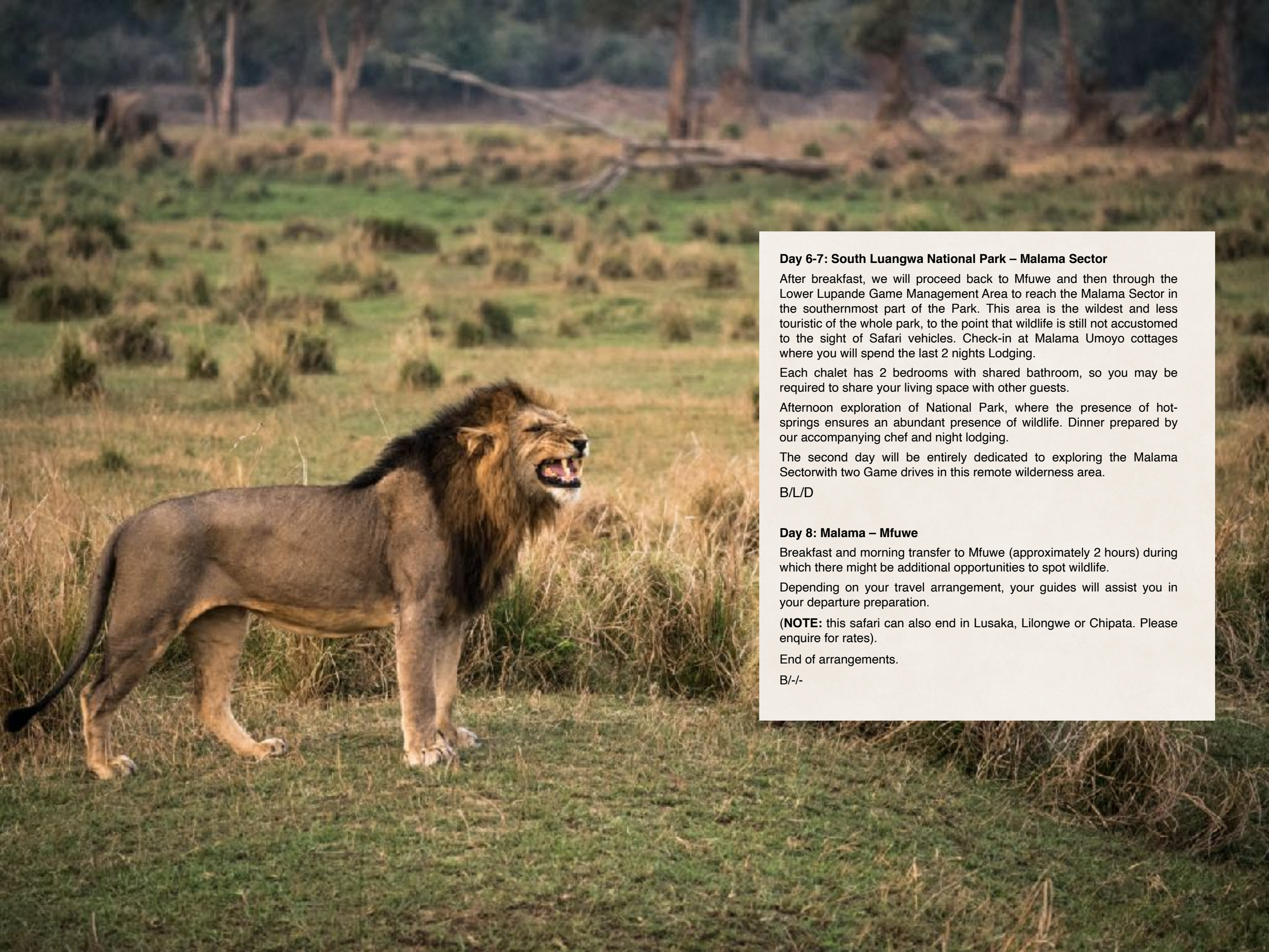
B/L/D

Days 4-5: South Luangwa National Park – Nsefu Sector

Wake up and breakfast. At 08.00 we will leave for a short transfer inside the Upper Lupande Game Management Area to reach the Nsefu Sector of the National Park. Here, you will be accommodated in an exclusive Remote Bush Camp for an incredible Wilderness experience. Lunch at the bushcamp, on the shores of the Luangwa River overlooking hippos and elephants as they come to drink. Afternoon game drive continuing after sunset, to maximise the chances to spot night predators. Dinner prepared by your accompanying chef and evening around the fire. Night at the bushcamp

The second day will be entirely dedicated to exploring the Nsefu Sector, with a fantastic visit at the hot springs and incredible sightings in this remote wilderness area.

B/L/D



Day 6-7: South Luangwa National Park – Malama Sector

After breakfast, we will proceed back to Mfuwe and then through the Lower Lupande Game Management Area to reach the Malama Sector in the southernmost part of the Park. This area is the wildest and less touristic of the whole park, to the point that wildlife is still not accustomed to the sight of Safari vehicles. Check-in at Malama Umoyo cottages where you will spend the last 2 nights Lodging.

Each chalet has 2 bedrooms with shared bathroom, so you may be required to share your living space with other guests.

Afternoon exploration of National Park, where the presence of hot-springs ensures an abundant presence of wildlife. Dinner prepared by our accompanying chef and night lodging.

The second day will be entirely dedicated to exploring the Malama Sector with two Game drives in this remote wilderness area.

B/L/D

Day 8: Malama – Mfuwe

Breakfast and morning transfer to Mfuwe (approximately 2 hours) during which there might be additional opportunities to spot wildlife.

Depending on your travel arrangement, your guides will assist you in your departure preparation.

(NOTE: this safari can also end in Lusaka, Lilongwe or Chipata. Please enquire for rates).

End of arrangements.

B/-/-

“Luangwa Valley Explorer” Safari

Description:

The Luangwa Valley is one of **Africa's best destinations** for pristine wildlife and untamed environments. This Safari visits **South Luangwa, Luambe** and **North Luangwa** National Parks for the **ultimate wildlife experience**.

SEASON AVAILABILITY

The Mobile Safari as described in the itinerary is available from JUNE to OCTOBER.

SAFARI OVERVIEW

DAYS: 8

TYPE OF VEHICLE: 4x4 Mobile Safari Vehicle / Game viewer

NO. OF PARTICIPANTS: 2-6

STAFF: English-speaking professional guide – Chef

MEALS: Specified in the itinerary as: B(reakfast) / L(unch) / D(inner)

START: Mfuwe

END: Mfuwe (NOTE: this safari can also start and end in Lusaka, Lilongwe or Chipata)

ACCOMMODATION: Camping (NOTE: Camping nights can be replaced with Lodging in South and North Luangwa)

DETAILED ITINERARY

Your Safari begins in Mfuwe (**NOTE:** this safari can also start from Lusaka, Lilongwe or Chipata. Please enquire for rates).

Mfuwe is the closest village from where to access South Luangwa National Park. Even though it is very close to such an internationally acclaimed attraction, it still maintains the spirit and looks of a traditional Zambian village.

Upon arrival, you will be welcomed by your guides and transferred to **THORNICROFT LODGE**, where you will spend two nights in

a permanent Safari tent (non en-suite), located in an area fully equipped with ablutions and hot showers. All meals prepared by the accompanying cook and all game viewing activities done by our resident guides on board of our vehicles.

If time allows, you can enjoy a first game drive in the afternoon.

-/-/D

Day 2: South Luangwa National Park

South Luangwa National Park is the most famous of National Parks in Zambia due to the abundance of wildlife and the great opportunities to spot large predators. In addition to a large population of felines (mostly leopards and lions), it is home of a large number of elephants, hippos, buffaloes and numerous endemic species such as Thornicroft giraffe, Cookson's wildebeests, Crashway's zebras. The Luangwa River has the highest concentration of hippos per km² in the whole Africa and offers great reproduction and hunting ground for many animals, such as fish eagles, jackals, hyenas, crocodiles and countless birds. Sunsets on the Luangwa River are unforgettable experiences and the visit to this National Park is considered one of the highlights for any true Africa lover.

Early wake and sunrise breakfast with hot beverages and toasts/biscuits before starting off on your first Game drive of the day. Return to camp around 10,00 and time to relax. Brunch, followed by an afternoon Night Drive that will continue after sunset to maximise your chances to spot nocturnal predators.

Dinner at camp, prepared by the accompanying cook and night in a permanent safari tent (non en-suite).

B/L/D

Days 3: South Luangwa National Park (Nsefu sector) - Luambe National Park

Early breakfast and departure for Luambe National Park, crossing the Nsefu sector of the South Luangwa National Park en-route.

At just 254 km², Luambe is one of Zambia's smallest national parks. Situated on the eastern bank of the Luangwa it lies in the heart of the Luangwa valley between Lukusuzi, North and South Luangwa national parks. The park was declared in 1938 and is therefore one of the oldest conservation areas in Zambia.

The wildlife found in Luambe is similar to that of its larger neighbouring parks and includes all the typical large herbivores, carnivores as well as some less well-known species. However, the animals of Luambe are generally present at lower densities than in the bigger parks with the advantage that Luambe is less crowded than its more famous neighbours.

Habitat diversity in Luambe National Park is enormous and within a few kilometres the vegetation ranges from riverine forest, cathedral mopane woodland, floodplain acacia thickets to the sausage tree-dotted open grasslands of the Chipuka plains.

There are over 200 species of bird in Luambe and elephant populations as well as those of lion and leopard are said to be on the increase – so it's well worth visiting now before everyone else catches on.

You will set camp at Luambe Community Campsite and enjoy an afternoon Game Drive in the park.

B/L/D

Day 4: Luambe National Park – North Luangwa National Park

Early wake and sunrise breakfast with hot beverages and toasts/biscuits before starting off for a Game drive in Luambe National Park. Return to camp around 10,00 and brunch, followed by a transfer to North Luangwa National Park.

This remote tract of land, covering 4636 square kilometres, offers one of the finest wilderness experiences in Zambia, if not Africa itself. It is not open to the public and there are no permanent lodges there. Access is with one of the few safari operators granted permission to conduct walking safaris.

The beauty of visiting this Park is the truly remarkable opportunities to experience Africa as it was.

South Luangwa National Park

It is wild and untouched and you are simply an unobtrusive witness to its natural beauty and drama. Although declared a wilderness area, the North Park, was not open to anyone other than Game Department rangers for more than thirty years. In 1984, Major John Harvey and his wife Lorna sought permission to conduct walking safaris in the area and for many years were the only operators in this remote wilderness.

Then in 1989, two scientists, Mark and Delia Owens, famous for their book 'Cry of the Kalahari', were granted permission to set up a research station in the Park. Through their influence and as a means of helping to curb poaching in the area, the authorities allowed entry to a few more safari operators who bring limited numbers into the Park for guided walking safaris and game drives. Their efforts in the North Luangwa are documented in their book 'Survivors Song / The Eye of the Elephant'.

There are very few roads and you are unlikely to see anyone else for the duration of your trip. Like the South Park, it lies on the western bank of the Luangwa River bordered on the other side by the dramatic Muchinga Escarpment which rises over 1000 meters from the valley floor. Its hazy outline can clearly be seen from the Luangwa River.

There are a number of tributary rivers running through the Park and into the Luangwa which play an important ecological role in the area. The crystal-clear Mwaleshi River trickles down the escarpment in a series of small waterfalls. It recedes in the dry season, leaving many pools along the way, drawing the animals from the bush to its banks in search of water. No game drives are permitted in the Mwaleshi area, and access is by organized walking safaris only.

The vegetation ranges from mopane woodland to riverine forest, open grasslands and acacia thicket. Trees include the beautiful sausage tree, vegetable ivory palms, red mahogany and leadwood.

You will reach Chifunda Campsite before sunset and set camp for the night in a fantastic spot overlooking the Luangwa River, in a community campsite equipped with toilets and showers.

Dinner around the fire prepared by your accompanying chef and night camping.

B/L/D

Day 5: North Luangwa National Park

Sunrise breakfast followed by a Walking safari in the park. Return to camp mid-morning and lunch. Afternoon Game Walk in the park.

Night will be camping around the fire with all meals prepared by the accompanying cook.

B/L/D

Day 6: North Luangwa National Park to South Luangwa National Park

Sunrise breakfast and breaking of the camp. Whole day return transfer to South Luangwa National Park, with en-route pic-nic lunch in a wilderness area. You shall reach a wilderness area located in the Nsefu Sector of the Park in the afternoon and set-up camp for one night. Dinner prepared by the accompanying cook and evening around the fire.

B/L/D

Day 7: South Luangwa National Park: Nsefu + Mfuwe sectors

Early wake and sunrise breakfast with hot beverages and toasts/biscuits before starting off on your first Game drive of the day. Return to camp around 10,00 and time to relax. Brunch, and breaking of camp before a short transfer to Mfuwe, where you will find accommodation in a permanent Safari tent (non en-suite) at Thornicroft Lodge, located in an area fully equipped with ablutions and hot showers.

Afternoon Night Drive that will continue after sunset to maximise your chances to spot nocturnal predators.

Dinner at camp, prepared by the accompanying cook and night in a permanent safari tent (non en-suite).

B/L/D

Day 8: End of tour

Breakfast and, depending on your travel arrangement, your guides will assist you in your departure preparation. End of arrangements.

B/-/-



Cultural Expeditions

“Likumbi Lya Mize”



The Ceremony:

The Likumbi Lya Mize has been declared "Masterpiece of the Oral and Intangible Heritage of Humanity" by UNESCO in 2005. It's the final and most exciting part of mukanda, an initiation ritual for boys between the ages of eight and twelve. This ritual is celebrated by the Vaka Chinyama Cha Mukwamayi communities, to which the Luvale, Chokwe, Luchazi and Mbunda people belong who live in the northwestern and western provinces of Zambia. Come with us and discover an incredible Cultural Experience, that only a small number of persons outside the Luvale tribe have had the honour and privilege to see. The ceremony actually starts about 1 to 3 months before, when young children are taken away from their village to symbolise their "death" as children, tundanji, who do not belong to the world of the living. The mukanda involves the circumcision of the initiates, tests of courage and lessons on their future role as men and husbands. Each initiate is assigned a specific masked character, who is with him throughout the entire process. These characters include Chisaluke, who represents a powerful and wealthy man with spiritual influence; the Mupala, the "lord" of the mukanda and protective spirit with supernatural abilities; Pwevo, a female character who represents the ideal woman and is responsible for the musical accompaniment of the rituals and dances. The Makishi is another masked character, representing the spirit of a deceased ancestor who returns to the world of the living to assist the boys. The end of the mukanda is celebrated with a graduation ceremony called chilende. The whole village attends the Makishi dance and the audience is entertained with pantomime-like artistry until the graduates re-emerge from the camp and are reintegrated as adult men into their communities and families. This ritual has an educational function of transmitting practical survival-skills as well as knowledge about nature, sexuality, religious beliefs and the social values of the community. Our Tour will take you in the heart of one of the most authentic and mystical celebration left in Africa nowadays!

ATTENTION: DATES IN THIS PROGRAM ARE TO BE CONSIDERED PROVISIONAL UNTIL OFFICIAL CONFIRMATION FROM CULTURAL AND HERITAGE COMMITTEE



Likumbi Lya Mize

Likumbi Lya Mize Expedition

EXPEDITION OVERVIEW

Days: 11

Type of vehicle: 4x4 Mobile Safari Vehicle (max. 9 passengers + 2 staff)

No. of Participants: 2-9

Staff: English-speaking professional guide – Chef

Meals: Specified in the itinerary as: B(reakfast) / L(unch) / D(inner)

Start: Livingstone

End: Lusaka

Accommodation: Lodging in Livingstone, Mongu, Lusaka, and during the Likumbi Lya Mize ceremony. Camping at Ngonye Falls and Kafue N.P.

DETAILED ITINERARY

THURSDAY 22 AUGUST: Lusaka (Travel distance: 40km / 1 hr – Tarmac Road)

Upon arrival at Lusaka international airport, you will be welcomed by your guides and assisted in final preparations (local SIM card, forex, etc.) before your Safari starts. Short transfer across town and check-in at Sandy's Creations, a beautiful accommodation immersed in wonderful gardens with two swimming pools, bars and restaurants. Dinner in Lusaka not included.

-/-/-

FRIDAY 23 AUGUST: Kafue National Park – Busanga Plains (Travel distance: 370km / 7 hr – Tarmac Road + Bush Trails)

Kafue National Park, extending for 22,400 km², is Africa's second largest National Park and is characterised by many different eco-systems and sceneries. From the southern Nanzhila Plains, to the lake habitat of Itezhi-tezhi, to the fit bush and Miombo forest up to the northern Busanga plains.

Breakfast at the Lodge and departure for Kafue National Park around 07.00. You will reach your camp in the Busanga Plains after approximately 7 hours of driving, depending on road conditions and Game sightings along the way. Depending on the time of travel, en-route Pic-nic lunch in a scenic location within the National Park or once arrived at camp.

Afternoon at leisure after the transfer. Dinner prepared by our accompanying chef and evening around the campfire. Night camping.

B/L/D

SATURDAY + SUNDAY 24-25 AUGUST: Kafue National Park – Busanga plains

Days entirely dedicated to game-viewing activities in the Kafue

National Park: either 2 Game drives per day (sunrise and afternoon) or a full-day game drive.

All meals prepared by our accompanying chef and Game drives on board of our vehicles. Evenings will be spent around the campfire and night camping.

B/L/D

MONDAY 26 AUGUST: Kafue – Kaoma (Travel distance: 210 km / 5 hr – Tarmac Road + Bush Trails)

After Breakfast, a Game Drive will take us back outside of the National Park and onto the main tarmac road. From here, short transfer to Kaoma, a small town along the way to the western province. The name Kaoma comes from “*Nkoya*” that came from the first Zambian ethnic group to settle in the area around the 6th century.

Being such a small town, accommodation will be in a local guesthouse which standards may be lower compared to international expectations. Traditional Zambian dinner at the guesthouse.

B/L/D

TUESDAY 27 AUGUST: Kaoma - Zambezi Village (Travel distance: 270 km / 5-6 hr – Tarmac Road + Bush Trails + Deep Sand)

ATTENTION: THIS TRANSFER CROSSES A VERY REMOTE AND WILD REGION, COMBINING TARMAC, HARD GRAVEL, VILLAGE TRAILS, SAND PATHS AND RIVER PONTOON CROSSING. THIS IS GOING TO BE AN EXCITING BUT TIRING TRANSFER IN A VERY REMOTE AREA!

After a very early breakfast, we will cover the 270 km (most of them off-road!) that separates Kaoma from a small village called Zambezi, where the Likumbi Lya Mize will take place. We will stop for a break along the way and cross a pontoon on the Watopa river. Arrival is expected in the early afternoon and we will find accommodation in a lodge.

ATTENTION: ZAMBEZI IS A VERY RURAL AREA WITH ONLY ONE GOOD LEVEL LODGE, USUALLY RESERVED FOR POLITICIANS AND HEAD OF STATES WHO VISIT DURING THE LIKUMBI LYA MIZE CEREMONY. DUE TO OUR LONG-ESTABLISHED RELATIONSHIP WITH THE LUVALE ROYAL CHIEFTAINSHIP WE WILL HAVE A PREFERENTIAL LANE TO BOOK THIS LUXURY HOTEL. HOWEVER, PAYMENT FOR THESE ROOMS MUST BE DONE WELL IN ADVANCE AND IF THE PRESIDENT OR HIS DIGNITARIES WILL DECIDE TO OCCUPY THE WHOLE LODGE, THEY WILL HAVE THE PRIORITY OVER ANY OTHER EXISTING BOOKING.

IF IT WILL NOT BE POSSIBLE TO FIND ACCOMMODATION IN THIS LODGE, WE WILL HAVE TO RESORT TO LOCAL GUESTHOUSES WHERE STANDARDS MIGHT BE MUCH INFERIOR TO THOSE OF WESTERN ACCOMMODATIONS. THEREFORE, SPIRIT OF ADAPTATION IS ESSENTIAL!

After arrival, you can wander around the small village of Zambezi, that will be a hive of activities for the Likumbi Lya Mize or rest at your

Night spent lodging. Own arrangements for dinner.
B/L/-

WEDNESDAY 28 AUGUST - First day of the Likumbi Lya Mize.

Makishi (the spirit of the ancestors of the Luvale people) emerge from their graves and possess the bodies of the dancers. These spirits, confused and disorientated are led by the Luvale women along the streets of Zambezi, screaming, shouting, dancing and performing esoteric rituals along the way. At sunset, they will gather along the shores of the Zambezi river and cross by boat on the other side, symbolising the crossing of the passage from the world of the dead to the world of the living. **Your expert guide will lead you through the village, ensuring you will always be at the centre of the celebrations.**

Own arrangements for meals during the celebration. Night at the guesthouse.

B/-/-

THURSDAY 29 AUGUST- Second day of the Likumbi Lya Mize.

After breakfast, we will have a meeting during which you will learn about the history of the Luvale people, their traditions and the Likumbi Lya Mize, explaining the rituals and meaning.

Afterwards, we will proceed to attend the second day of celebration of the Likumbi Lya Mize on the white beach of the Zambezi. At Sunset, return to the guesthouse.

Own arrangements for meals during the celebration. Night at the guesthouse.

B/-/-

FRIDAY 30 AUGUST - Third day of the Likumbi Lya Mize.

After breakfast, visit of the Zambezi village and purchase of gifts to present to the Senior Chief to thank him for his hospitality. We will then try to obtain a private meeting with the chief inside the Royal Palace of Mize, during which we may ask questions about the tradition of Likumbi Lya Mize or simply pay our respects (*Please note: The chief will be extremely busy during this day, so we might have to wait a long time and audience might be rejected if he will be too busy meeting with politicians and dignitaries*).

In the afternoon, the celebrations of Likumbi Lya Mize will take place outside the royal palace. At Sunset, return to the guesthouse.

Own arrangements for meals during the celebration. Night at the guesthouse.

B/-/-

SATURDAY 31 AUGUST - Fourth day of the Likumbi Lya Mize.

After breakfast, we cross the Zambezi river and reach the royal palace arena, where the climax of Likumbi Lya Mize will take place. We will have VIP seats in a vantage position, being personal guests of the Royal Family.

Attention: it's possible that we will have to wait for quite some time in order to allow all the head of states, the politicians and representatives of all tribes to reach the Arena. Therefore, we will have to be patient while waiting for everything to be ready.

During the day, there will be many celebrations and rituals that will be explained by your guide. Makishi will enter the arena and kneel in front of their king, while the living will be chanting the praise of the Luvale people. There will be numerous dances by the traditional dancers, animal sacrifice and finally the Tudanji children will come back to life in a climax of dances. Lunch and drinks can be bought from the numerous stands next to the arena.

At sunset, we will return to the guesthouse for our last night in Zambezi.

B/-/-

SUNDAY 1 SEPTEMBER: Zambezi Village – Solwezi (Travel distance: 500 km / 7 hr – Tarmac Road)

Early departure for a long transfer (500 km of tarmac road) to Solwezi, the end of our journey. Solwezi used to be a small, quiet village counting a thousand people until just a few years ago, when it experienced a sudden growth thanks to the discovery of precious metals and the opening of some of the most important mines in the Copperbelt region. This is the capital city of the Luba-Kaonde people, and it completes our cultural journey among the culture of the Luba / Lunda and Vaka Chinyama Tribes.

Accommodation will be at the Royal Solwezi hotel, a comfortable accommodation in this very remote region. Experts on the Luba-Kaonde traditions will accompany our dinner narrating the history of their tribe.

B/-/-

MONDAY 2 SEPTEMBER – Lusaka / End of Tour

Breakfast at the lodge and time to relax and prepare your luggage. Based on your flight schedule, you will be brought to Solwezi airstrip, where you will board a domestic flight to Lusaka and connect with your international return flight. End of the tour.

B/-/-



“Kulamba”

The Ceremony:

The Kulamba Ceremony takes place at the end of August and is a moment when all the subordinate Chiefs of the Chewa people, currently spread between Zambia, Malawi and Mozambique, meet in Mkaika to pay homage to the Paramount chief Kalonga Gawa Undi and celebrate the history and culture of the Chewa.

The ceremony was banned by the colonial masters in 1934 but paramount chief Kalonga Gawa Undi Chivunga revived the ceremony in 1984. Since then, it has been an annual event. On the day of the ceremony, the centre of attraction is the main area where all the dignitaries are seated. Visitors from Zambia and Chewas from neighbouring Malawi and Mozambique are entertained to a variety of dances that are from three countries.

A variety of dances like Gule Wamukulu (Nyau), Gologolo, Makanja, Muganda, Chinamwali, Chimtali (the female dance) and many others are performed during the ceremony. The Nyau or popularly known as the Gule Wamukulu among locals, is the most celebrated dance among the Chewa people.

The Nyau dance (Gule Wamukulu) was officially recognised by UNESCO in 2006. Nyau dancers are referred to as Vilombo (animals) in Chewa, believed to emanate from dead spirits. There are a lot of Nyau dances at any ceremony. The type of the dance depends to a larger extent on the nature of the occasion. More than 30 different Nyau dances are performed at a single festival with each dancer adorning a different mask in an array of colours.

Some of the Nyau masks are a reflection of human behaviour in true life. The people can tell the type of Nyau entertaining them through its dress or mask. Some Nyau are frightening while others are fun.

Also part of the Kulamba ceremony is an annual initiation ceremony for the young girls who have come of age. The Anamwali or young girls have been in confinement where they have spent time being taught skills and responsibilities of womanhood.

Kulamba traditional ceremony brings together chiefs from 137 chiefdoms in Malawi, 33 in Mozambique and 42 in Zambia. The significance of this is its ability to bring Chewa under different chiefdoms and countries to Mkaika, capital of the Chewa and palace of paramount chief Kalonga Gawa Undi, to celebrate these festivals together regardless of today's political boundaries

ATTENTION: DATES IN THIS PROGRAM ARE TO BE CONSIDERED PROVISIONAL UNTIL OFFICIAL CONFIRMATION FROM CULTURAL AND HERITAGE COMMITTEE



Kulamba Expedition

EXPEDITION OVERVIEW

Days: 10

Type of vehicle: Minibus / 4x4 Mobile Safari Vehicle (max. 9 passengers + 2 staff)

No. of Participants: 2-9

Staff: English-speaking professional guide – Chef

Meals: Specified in the itinerary as: B(reakfast) / L(unch) / D(inner)

Start: Lusaka

End: Lusaka

Accommodation: Lodging

DETAILED ITINERARY

Day 1 – SATURDAY, AUGUST 24: Lusaka

Upon landing at Lusaka international airport, you will be welcomed and transferred to Wild Dogs Lodge, in the Northern part of the city, where you will spend 1 night on a B&B basis. Dinner in Lusaka not included.

-/-/-

Day 2 – SUNDAY, AUGUST 25: Lusaka – South Luangwa National Park (Domestic Flight)

Breakfast at the lodge and short transfer to Lusaka international airport, where you will board a domestic flight to Mfuwe - South Luangwa National Park.

Mfuwe is the closest village from where to access South Luangwa National Park. Even though it is very close to such an internationally acclaimed attraction, it still maintains the spirit and looks of a traditional Zambian village.

Once arrived in Mfuwe, you will be welcomed by our resident guides and transferred to Thornicroft Lodge, where you will spend 3 nights in a Bush Style Chalet with a Full Board arrangement prepared by our chefs and all Game viewing activities on board of our vehicles.

Depending on the time of arrival, you may be able to have a first afternoon Game drive in the park. Dinner at the lodge and night lodging.

B/-/D

Days 3/4 – MONDAY/TUESDAY, AUGUST 26/27: South Luangwa National Park

South Luangwa National Park is the most famous of National Parks in Zambia due to the abundance of wildlife and the great opportunities to spot large predators. In addition to a large population of felines (mostly leopards and lions), it is home of a large number of elephants,

hippos, buffaloes and numerous endemic species such as Thornicroft giraffe, Cookson's wildebeests, Crashway's zebras. The Luangwa River has the highest concentration of hippos and leopards per km² in the whole Africa and offers great reproduction and hunting ground for many animals, such as fish eagles, jackals, hyenas, crocodiles and countless birds. Sunsets on the Luangwa River are unforgettable experiences and the visit to this National Park is consider one of the highlights for any true Africa lover.

During your stay, you will have 2 game drives per day and all meals at the camp. Nights will be at Nsefu wilderness Safari Camp.

B/L/D

Day 5 – WEDNESDAY, AUGUST 28: Mfuwe – Katete: Kulamba Ceremony

Early morning breakfast and departure to Katete, where you will check in at Chengetani Lodge or similar, one of the nicest accommodations in the small and rural town of Katete. Arrival is expected approximately 3 hours after departure. Check in at your accommodation in en-suite rooms and proceed to the celebration site where you will enjoy the first celebrations of the Kulamba ceremony. Own arrangements for lunch at the ceremonial site (local street food) and dinner at the lodge (not included).

B/-/-

Day 6/8 – THURSDAY/SATURDAY AUGUST 29/31: Katete: *Celebration of the Kulamba festival.*

Breakfast at the lodge. With the assistance of our guides and our local representative in Katete among the Chewa people, you will be facilitated in getting the best possible experience during the Kulamba celebrations.

On the last day, you will have VIP seats in the main arena, where all the dances, masks, snake enchanters and flying spirits will perform in front of Chief Gawa Unidi, and you will be able to move freely around the arena escorted by your guides, to take fantastic pictures and videos of this unforgettable event.

B/-/-

Day 9 – SUNDAY, SEPTEMBER 1: Katete - Lusaka

Breakfast at the lodge and early departure for Lusaka (450 km of Tarmac road – approx.. 7 hours) where we expect to arrive around lunchtime. Accommodation at Wild Dogs Lodge. In the afternoon, time available to relax and prepare your luggage. Dinner in Lusaka not included.

B/-/-

Day 10 – MONDAY, SEPTEMBER 2: End of arrangements

Breakfast at the lodge. Depending on the time of your flight you will be taken to the airport. End of arrangements

B/-/-



SHAMBA

TRAVEL GROUP



The Shamba Travel Group offers an exciting range of properties in unique destinations throughout Zambia and services, specializing in providing adventurous and hospitable travel experiences.

A Complete Range of Safari Experiences



AFRICAN VIEW TOURS AND SAFARIS LTD.

Tour Operator & Safari Specialist

WEB: www.africanview.it

MAIL: info@africanview.it

WHATSAPP: +260 979 374953

FB: African View Tours and Safaris

TIK TOK: @lionhugger76 - Safari Life



MOBILE SAFARIS

Our a contemporary interpretation of the early explorers' expeditions.



MOTORCYCLE SAFARIS

Adventure, Freedom and Excitement taken to the next level.



YOUNG SAFARI CADETS

Passing the "Art of Safari" to younger generations, teaching love and passion for the environment.



WILDERNESS TRAINING

Survivalism, bushcraft, wildlife knowledge, orienteering for the most adventurous ones.



EXCLUSIVE REMOTE BUSH CAMPS

Exclusive, Classic, Remote Bush camps in South Luangwa, Lower Zambezi and Victoria Falls Gorge.